



MASTERTEC

SPECIAL ARTICLES FOR REINFORCED CONCRETE CONSTRUCTION

FORMWORK ACCESSORIES

PRODUCT RANGE

PRODUCT GROUP 6

2024/2025

FORMWORK ACCESSORIES



**STOPPER SCREW +
STOPPER**

pages 5 – 6



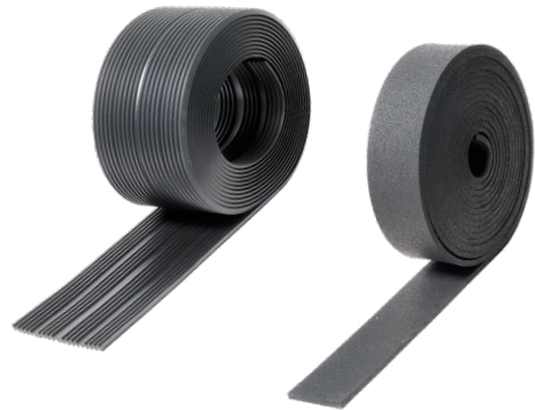
**STOPPER distance tube +
STOPPER sealing cone**

pages 7 – 8



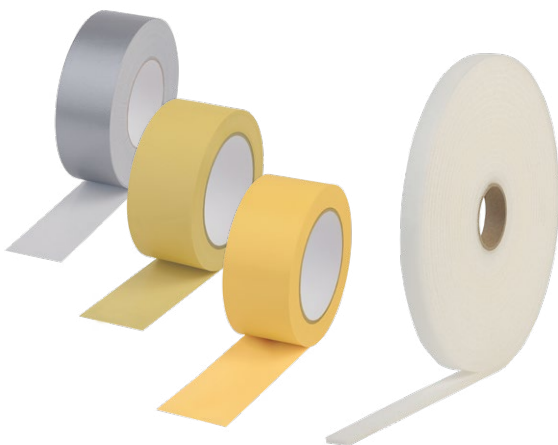
RONDO MINI + ActiveRings

page 8



**Corrugated bearings +
impact sound insulation**

page 9



KLEBO tapes

page 10



Damp proof courses

page 11

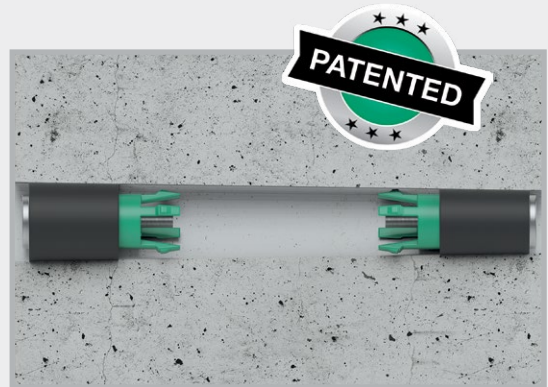
WATERPROOFING TECHNOLOGY

for inner and outer waterproofing of plastic or fibre cement formwork tie points and conical anchor holes

STOPPER SCREW



Screwed sealing of formwork tie points – maximum safety with superb appearance



STOPPER



Inner seals for plastic and fibre cement distance tubes



RONDO MINI



Sealing collars for waterproofing of plastic or fibre cement distance tubes



ActiveRing



The swelling external high-pressure seal for plastic and fibre cement distance tubes



STOPPER SCREW



Technical details page 12

STOPPER SCREW type in



Art.Gr. 611

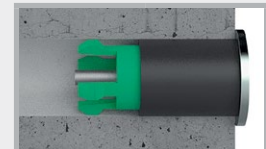


Art. no.	Description	Tie point inner diameter	PU per bucket	Secondary packaging	Weight per PU
046230	STOPPER SCREW 17 · type 3 in Total length: 72 mm	17 to 19.5 mm	100 pcs. incl. 2 bits	1 pallet = 55 buckets	2.80 kg
046240	STOPPER SCREW 20 · type 4 in Total length: 72 mm	19.5 to 22 mm	100 pcs. incl. 2 bits	1 pallet = 55 buckets	3.20 kg
046210	STOPPER SCREW 22 · type 1 in Total length: 72 mm	21.5 to 23 mm	100 pcs. incl. 2 bits	1 pallet = 55 buckets	3.60 kg
046220	STOPPER SCREW 23 · type 2 in Total length: 72 mm	22.3 to 25.4 mm	100 pcs. incl. 2 bits	1 pallet = 55 buckets	4.00 kg
046250	STOPPER SCREW 25 · type 5 in Total length: 72 mm	25 to 28 mm	100 pcs. incl. 2 bits	1 pallet = 55 buckets	4.80 kg
046270	STOPPER SCREW 28 · type 7 in Total length: 72 mm	27.5 to 29 mm	100 pcs. incl. 2 bits	1 pallet = 55 buckets	5.10 kg
046260	STOPPER SCREW 31 · type 6 in Total length: 80 mm	31 to 34 mm	50 pcs. incl. 2 bits	1 pallet = 55 buckets	3.80 kg

STOPPER SCREW type covered



Art.Gr. 611



Art. no.	Description	Tie point inner diameter	PU per bucket	Secondary packaging	Weight per PU
046330	STOPPER SCREW 17 · type 3 covered Cover plate: 28 mm, total length: 75 mm	100 pcs. incl. 2 bits	100 pcs. incl. 2 bits	1 pallet = 55 buckets	3.85 kg
046340	STOPPER SCREW 20 · type 4 covered Cover plate: 28 mm, total length: 75 mm	100 pcs. incl. 2 bits	100 pcs. incl. 2 bits	1 pallet = 55 buckets	4.30 kg
046310	STOPPER SCREW 22 · type 1 covered Cover plate: 28 mm, total length: 75 mm	100 pcs. incl. 2 bits	100 pcs. incl. 2 bits	1 pallet = 55 buckets	4.80 kg
046320	STOPPER SCREW 23 · type 2 covered Cover plate: 32 mm, total length: 75 mm	100 pcs. incl. 2 bits	100 pcs. incl. 2 bits	1 pallet = 55 buckets	5.40 kg
046350	STOPPER SCREW 25 · type 5 covered Cover plate: 32 mm, total length: 75 mm	100 pcs. incl. 2 bits	100 pcs. incl. 2 bits	1 pallet = 55 buckets	6.30 kg
046370	STOPPER SCREW 28 · type 7 covered Cover plate: 32 mm, total length: 75 mm	100 pcs. incl. 2 bits	100 pcs. incl. 2 bits	1 pallet = 55 buckets	6.60 kg
046360	STOPPER SCREW 31 · type 6 covered Cover plate: 38.5 mm, total length: 83 mm	50 pcs. incl. 2 bits	50 pcs. incl. 2 bits	1 pallet = 55 buckets	4.80 kg

Accessories

Art. no.	Description	PU	Weight per pc.	
046170	Hand-held cleaning brush Tie points of 17 – 34 mm	1 pc.	0.08 kg	
NEW! 046171	Mechanical cleaning brush Tie points of 17 – 34 mm for drills or cordless screwdrivers	1 pc.	0.06 kg	
NEW! 046183	STOPPER SCREW torque set 1 x torque bit holder, 2 x bits TX 20	1 set	0.04 kg	

STOPPER

Inner seals for plastic and fibre cement distance tubes

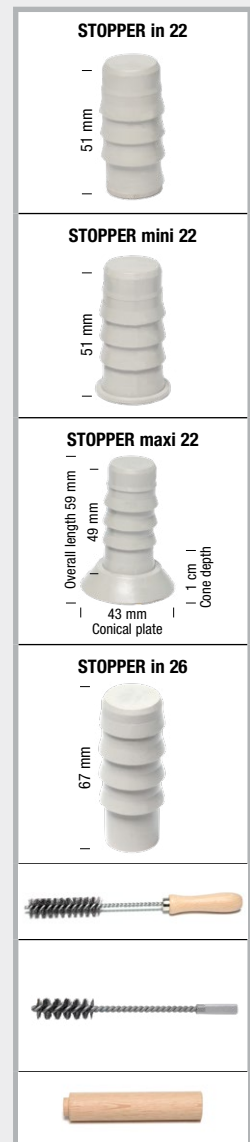


Technical details pages 13 – 14



Art.Gr.
610

Art. no.	Description	PU	Secondary packaging	Weight per bucket
046140	STOPPER in 22 for distance tubes inner diameter 21.5-23 mm	Bucket of 250 pcs.	1 pallet = 48 buckets	6.50 kg
046150	STOPPER mini 22 for distance tubes inner diameter 21.5-23 mm	Bucket of 250 pcs.	1 pallet = 48 buckets	6.75 kg
046160	STOPPER maxi 22 for distance tubes inner diameter 21.5-23 mm	Bucket of 250 pcs.	1 pallet = 32 buckets	9.25 kg
046163	STOPPER in 26 for distance tubes inner diameter 26 mm	Bucket of 250 pcs.	1 pallet = 32 buckets	10.75 kg
046170	Hand-held cleaning brush Tie points of 17 – 34 mm	1 pc.		0.08 kg per pc.
NEW! 046171	Mechanical cleaning brush Tie points of 17 – 34 mm for drills or cordless screwdrivers	1 pc.		0.06 kg per pc.
046180	Drive-in aid for STOPPER 22 + 26 mm	1 pc.		0.08 kg per pc.



Use a 1500-2000 g hard rubber hammer to drive in the STOPPER.

Product description

- STOPPERS are drive-in plugs which were developed for pressure-tight sealing of fibre cement and plastic distance tubes.
- Highly resistant plastic specially developed for this application
- Temperature range -35°C to +70°C; if the plugs are installed at ambient temperatures below 0°C, they must be stored above freezing point beforehand for a better installation.
- All-weather installation
- Seals immediately after driving in
- Little storage space required



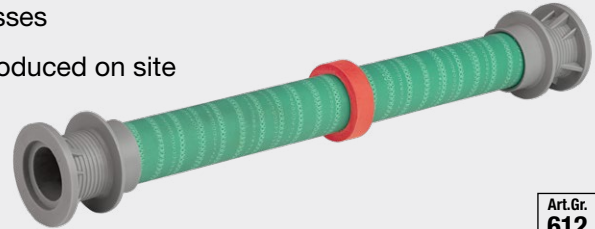
STOPPER distance tube



Pressure water-tight plastic distance tube with cone (Ø 22 mm) on both sides

Technical details page 15

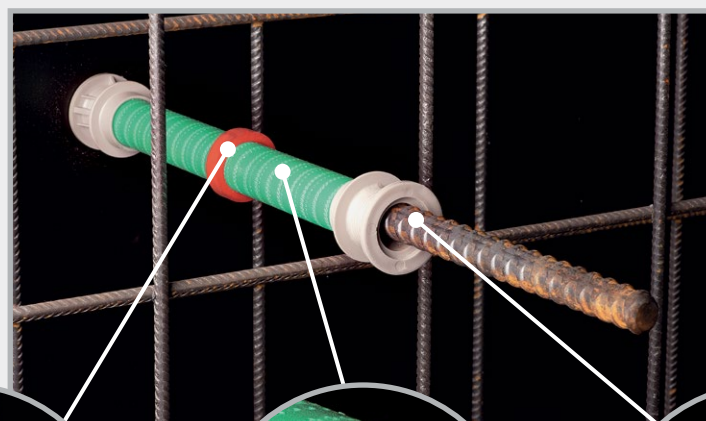
- Pressure water-tight transition to the concrete
- Ready-to-install delivery for all common wall thicknesses
- Special lengths available at short notice or can be produced on site
- Pressure water-tight system sealing for internal closure with:
 - STOPPER in / mini 30 m water column
 - STOPPER SCREW 70 m water column



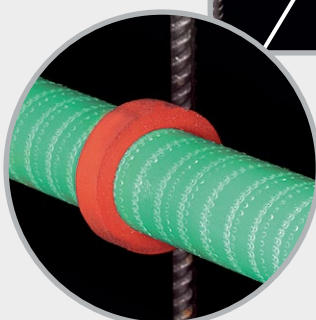
Art.Gr.
612

Art. no.	Description	PU	Secondary packaging	Weight per 100 pcs.
048200	STOPPER distance tube 22/200 Ø 22 mm, length 200 mm	100 pcs.	1 pallet = 18 bags	5.30 kg
048240	STOPPER distance tube 22/240 Ø 22 mm, length 240 mm	100 pcs.	1 pallet = 16 bags	6.00 kg
048250	STOPPER distance tube 22/250 Ø 22 mm, length 250 mm	100 pcs.	1 pallet = 16 bags	6.00 kg
048300	STOPPER distance tube 22/300 Ø 22 mm, length 300 mm	100 pcs.	1 pallet = 16 bags	6.80 kg
048350	STOPPER distance tube 22/350 Ø 22 mm, length 350 mm	100 pcs.	1 pallet = 14 bags	7.60 kg
048365	STOPPER distance tube 22/365 Ø 22 mm, length 365 mm	100 pcs.	1 pallet = 14 bags	7.70 kg
048400	STOPPER distance tube 22/400 Ø 22 mm, length 400 mm	100 pcs.	1 pallet = 12 bags	8.20 kg

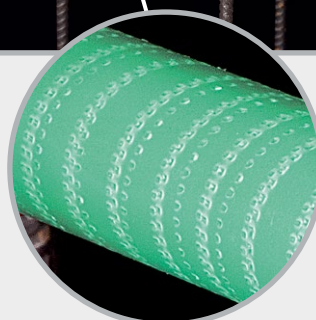
Other lengths are available at short notice.



Ready-to-install delivery for all common wall thicknesses.



Pressure water-tight concrete transition thanks to ActiveRing



Roughened tube surface for optimum concrete bond




For anchor bars Ø 15/17 mm

STOPPER sealing cone

Fibre cement cone for bonding for a visually appealing distance tube closure [Technical details page 15](#)

Art.Gr. 610

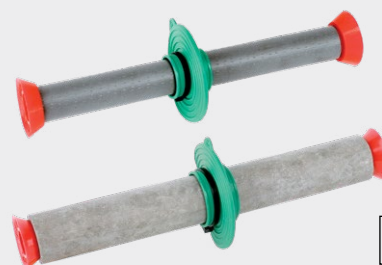
Art. no.	Description	PU	Secondary packaging	Weight per carton	
046200	STOPPER sealing cone Ø 22 mm	Carton of 100 pcs.	1 pallet = 40 cartons	2.97 kg	

RONDO MINI





Sealing collars for waterproofing of plastic or fibre cement distance tubes

[Technical details page 16](#)



Art.Gr. 630

Art. no.	Type	Description	PU	Weight per bag	
090870	RONDO MINI 26 Suitable for 25-27 mm	for plastic distance tubes 22/26 mm Waterstop 2 cm Bearing width 2.7 cm	Bag of 50 pcs. including plastic fastening straps	1.50 kg	
090873	RONDO MINI 40 Suitable for 38-42 mm	for fibre cement distance tubes 22/40 mm Waterstop 2 cm Bearing width 2.7 cm	Bag of 50 pcs. including plastic fastening straps	2.00 kg	



ActiveRing



The swelling external high-pressure seal for plastic and fibre cement distance tubes [Technical details page 17](#)




Art.Gr. 620

Art. no.	Description	PU	Secondary packaging	Weight per bag	
047200	ActiveRing mini for outer pipe diameters 25-32 mm e.g. plastic distance tubes 22/26 26/31 26/32	Bag of 250 pcs.	1 pallet = 144 bags	1.75 kg	 ActiveRing mini
047250	ActiveRing maxi for outer pipe diameters 38-42 mm e.g. fibre cement distance tubes	Bag of 250 pcs.	1 pallet = 70 bags	2.50 kg	 ActiveRing maxi

CORRUGATED BEARING, IMPACT SOUND INSULATION + CONSTRUCTION BEARING


Corrugated bearing [Technical details page 18](#)

Art.Gr.
641

Art. no.	Description	PU	Secondary packaging	Weight per roll	
060010	Corrugated bearing 10 mm Size: 10000 x 200 x 10 mm with 3 parting seams	1 roll = 2 m ²	1 pallet = 30 rolls	15.60 kg	


Impact sound insulation T1 rolls [Technical details page 19](#)

Art.Gr.
640

Art. no.	Description	PU	Secondary packaging	Weight per roll	
060240	Impact sound insulation roll T1 Size: 10000 x 100 x 5 mm	1 roll	1 pallet = 110 rolls	4.65 kg	
060230	Impact sound insulation roll T1 Size: 10000 x 100 x 10 mm	1 roll	1 pallet = 60 rolls	8.25 kg	


Impact sound insulation T1 strips

Art.Gr.
640

Art. no.	Description	PU	Secondary packaging	Weight per strip	
060210	Impact sound insulation strip T1 Size: 1000 x 100 x 10 mm	1 strip	1 pallet = 750 strips	0.89 kg	


Impact sound insulation T1 boards

Art.Gr.
640

Art. no.	Description	PU	Secondary packaging	Weight per board	
060110	Impact sound insulation board T1 Size: 1000 x 1000 x 10 mm	1 board	1 pallet = 80 boards	9.00 kg	
060113	Impact sound insulation board T1 Size: 1000 x 1000 x 20 mm	1 board	1 pallet = 40 boards	17.50 kg	


Construction bearing R1 roll [Technical details page 19](#)

Art.Gr.
642

Art. no.	Description	PU	Secondary packaging	Weight per roll	
060350	Construction bearing roll R1 , Size: 10000 x 50 x 10 mm	1 roll	1 pallet = 80 rolls	6.95 kg	

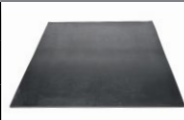
Construction bearing R1 strips

Art.Gr.
642

Art. no.	Description	PU	Secondary packaging	Weight per strip	
060340	Construction bearing strip R1 , Size: 1000 x 100 x 5 mm	1 strip	1 pallet = 1500 strips	0.71 kg	
060330	Construction bearing strip R1 , Size: 1000 x 100 x 10 mm	1 strip	1 pallet = 750 strips	1.55 kg	

Construction bearing R1 boards

Art.Gr.
642

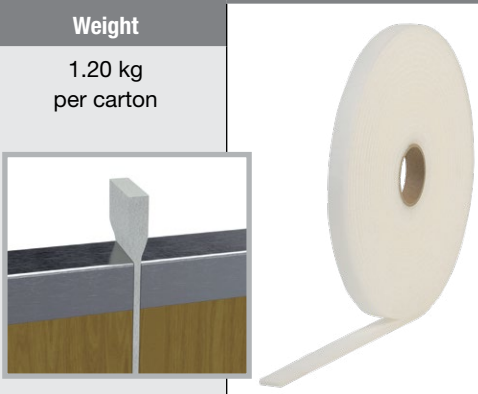
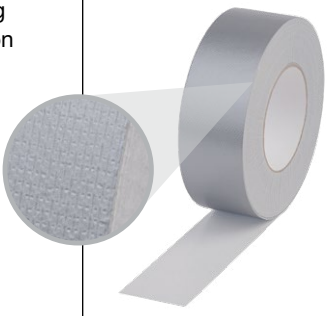
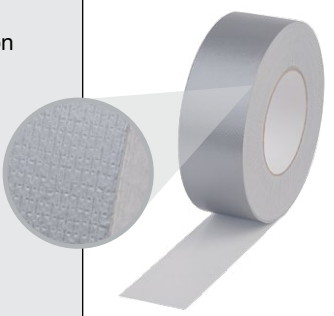
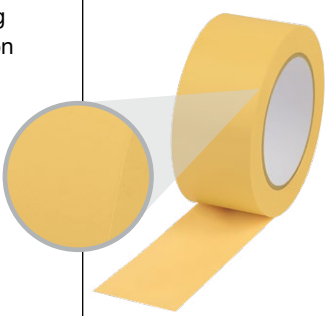
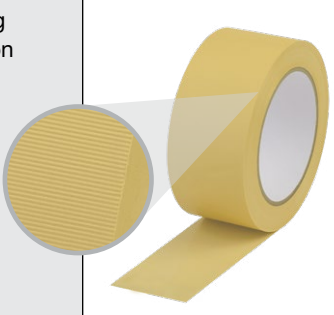
Art. no.	Description	PU	Weight/board	
060310	Construction bearing board R1 , Size: 1200 x 1000 x 5 mm	1 board	7.50 kg	
060300	Construction bearing board R1 , Size: 1200 x 1000 x 10 mm	1 board	15.00 kg	

Tailor-made sizes available at short notice

KLEBO tapes

High-quality adhesive tapes for daily use on construction sites

Art.Gr.
660

Art. no.	Description	PU	Weight	
044020	<p>KLEBO foam tape 19x6 mm One-sided self-adhesive foam tape</p> <p>Colour: white Roll length: 10 m Tape width: 19 mm Thickness: 6 mm</p> <p>Application: For sealing formwork butt joints against leakage of cement paste; sealing against dust, draughts and moisture;</p> <p>Technical data and properties: Open-cell PU foam coated with a strong pressure-sensitive adhesive; High initial and permanent adhesive strength; Very good ageing resistance;</p> <p>Application temperature: +5 °C to +40 °C Temperature resistance: -5°C to +60°C</p>	<p>1 carton of 16 rolls</p> <p>1 pallet = 24 cartons</p>	<p>1.20 kg per carton</p>	
044030	<p>KLEBO Duct Tape Premium, 48 mm</p> <p>Colour: silver Roll length: 50 m Tape width: 48 mm</p> <p>Application: Fabric adhesive tape with maximum adhesive strength for demanding bonds on rough and smooth substrates.</p> <p>Technical data and properties: Hand tearable; Moisture resistant; Thickness 0.22 mm; Application temperature: +5 °C to +40 °C Temperature resistance: -10°C to +70°C</p>	<p>1 carton of 24 rolls</p> <p>1 pallet = 24 cartons</p>	<p>12.10 kg per carton</p>	
044040	<p>KLEBO Duct Tape Standard, 48 mm</p> <p>Colour: silver Roll length: 50 m Tape width: 48 mm</p> <p>Application: Fabric adhesive tape with high adhesive strength for standard bondings on rough and smooth substrates.</p> <p>Technical data and properties: Hand tearable; Moisture resistant; Thickness 0.17 mm; Application temperature: +5 °C to +40 °C Temperature resistance: -10°C to +70°C</p>	<p>1 carton of 24 rolls</p> <p>1 pallet = 30 cartons</p>	<p>8.90 kg per carton</p>	
044050	<p>KLEBO PVC adhesive tape, smooth, 50 mm Tear-resistant soft PVC adhesive tape</p> <p>Colour: yellow Roll length: 33 m Tape width: 50 mm</p> <p>Application: Formwork tape to prevent cement paste from flowing out; Painter's and plasterer's tape for short-term use; universal applications;</p> <p>Technical data and properties: Moisture resistant – water repellent; Thickness 0.15 mm; Application temperature: +5 °C to +40 °C Temperature resistance: -5°C to +60°C</p>	<p>1 carton of 36 rolls</p> <p>1 pallet = 27 cartons</p>	<p>13.50 kg per carton</p>	
044060	<p>KLEBO PVC adhesive tape, cross-grooved, 50 mm Tear-resistant soft PVC adhesive tape</p> <p>Colour: yellow Roll length: 33 m Tape width: 50 mm</p> <p>Application: Formwork tape to prevent cement paste from flowing out; Painter's and plasterer's tape for short-term use; universal applications;</p> <p>Technical data and properties: The cross-grooved surface enables easy tearing by hand; Moisture-resistant – water-repellent; thickness 0.16 mm; Application temperature: +5 °C to +40 °C Temperature resistance: -5°C to +60°C</p>	<p>1 carton of 36 rolls</p> <p>1 pallet = 27 cartons</p>	<p>12.15 kg per carton</p>	

MURO-Top damp proof course

The barrier against rising damp

Art.Gr.
600



MURO-Top damp proof courses

- Made of the highly-resistant material polyolefin
- Protect foundation walls and masonry reliably and permanently against rising damp
- Profiled on both sides
- Resistant to many media
- Installed in a single layer with only 20 cm overlap at joint
- Foils with a thickness of less than 1.2 mm are not suitable for applications requiring a General Building Supervisory Test Certificate

Art. no.	Roll width	Roll length	Roll area	PU	Secondary packaging	Weight per roll
041115	11.5 cm	50 m	5.75 m ²	1 roll	Pallet of 500 rolls	approx. 1.50 kg
041150	15.0 cm	50 m	7.50 m ²	1 roll	Pallet of 400 rolls	approx. 2.25 kg
041175	17.5 cm	50 m	8.75 m ²	1 roll	Pallet of 350 rolls	approx. 2.35 kg
041200	20.0 cm	50 m	10.00 m ²	1 roll	Pallet of 300 rolls	approx. 2.55 kg
041240	24.0 cm	50 m	12.00 m ²	1 roll	Pallet of 240 rolls	approx. 3.05 kg
041250	25.0 cm	50 m	12.50 m ²	1 roll	Pallet of 240 rolls	approx. 3.70 kg
041300	30.0 cm	50 m	15.00 m ²	1 roll	Pallet of 200 rolls	approx. 4.15 kg
041365	36.5 cm	50 m	18.25 m ²	1 roll	Pallet of 160 rolls	approx. 4.85 kg
041425	42.5 cm	50 m	21.25 m ²	1 roll	Pallet of 150 rolls	approx. 5.85 kg
041500	50.0 cm	50 m	25.00 m ²	1 roll	Pallet of 120 rolls	approx. 6.30 kg
041750	75.0 cm	50 m	37.50 m ²	1 roll	Pallet of 100 rolls	approx. 10.30 kg
041000	100.0 cm	50 m	50.00 m ²	1 roll	Pallet of 80 rolls	approx. 13.85 kg

Technical data

Material: Polyolefin, roughly textured on both sides

Thickness: 0.3 mm, 0.35 mm including profile

Weight: Approx. 280 g/m²

Temperature range: -30°C to +60°C

- Resistance:
- Water-impermeable
 - Alkali-resistant
 - Compatible with bitumen
 - Rot-proof
 - Petrol-resistant
 - Diesel-resistant
 - Ground water-resistant
 - Ground water-neutral

STOPPER SCREW



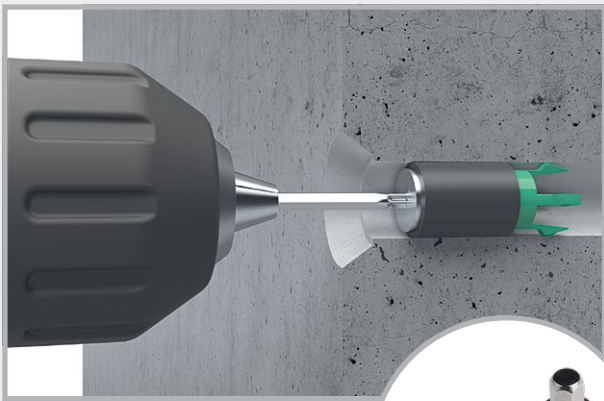
Screwed sealing of formwork tie points – maximum safety with superb appearance

- Pressure water-tight, soundproof and radon-tight
- Fire resistance class EI 240
- For fibre cement and plastic distance tubes
- For conical anchor holes
- Little storage space required
- All-weather installation



Installation

Insert – Tighten – Tight



Torque set for ensuring the correct mounting torque



Appearance

Type "in"



Type "covered"



Seal for distance tubes with lip seal (above) or with cone (below).

Water pressure test



Type of formwork tie point	STOPPER SCREW Type "in" Water column	STOPPER SCREW Type "covered" Water column
Distance tube Ø 22 mm Plastic/fibre cement	70 m	70 m
Distance tube Ø 26 mm Plastic	40 m	40 m
Distance tube Ø 27 mm Fibre cement	40 m	40 m
Distance tube Ø 32 mm Plastic	40 m	40 m
Conical anchor holes	50 m	50 m

STOPPER



Inner seals for plastic and fibre cement distance tubes



Installation of STOPPER in



1 The STOPPER in is pushed into the distance tube.



2 The STOPPER in is driven in with a 1500-2000 g hard rubber mallet.



3 Flush seal for distance tubes with lip seal.



4 Flush seal for distance tubes with cone.

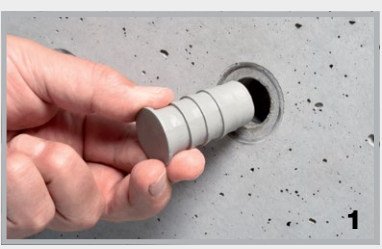


5 The STOPPER in can be inserted to any depth.



6 After inserting the STOPPER in, a cone can be glued in.

Installation of STOPPER mini



1 Position and drive in the STOPPER mini



2 Sealing of distance tube with lip



3 Sealing of distance tube with cone

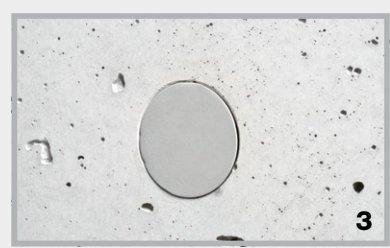
Installation of STOPPER maxi



1 Push the STOPPER maxi into the distance tube

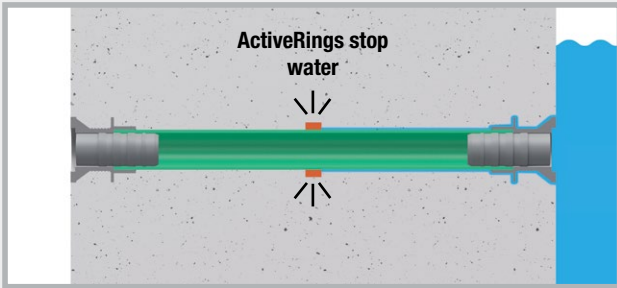


2 Drive in with rubber mallet



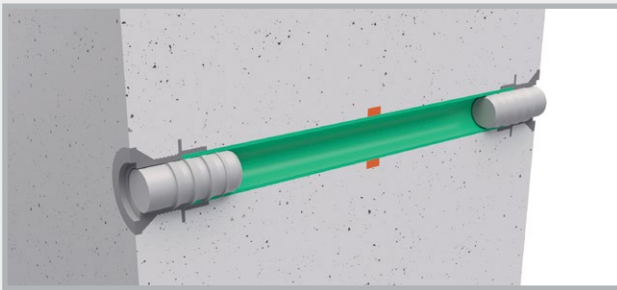
3 Pressure-tight and flush seal

STOPPER distance tube

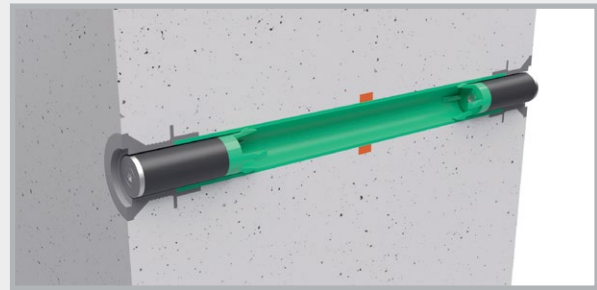


After stripping the formwork, the ActiveRing sits centrally in the concrete part. The ActiveRing seals the transition between the STOPPER distance tube and the concrete securely and permanently.

Sealing options for the STOPPER distance tube



Pressurised water test up to 30 m water column



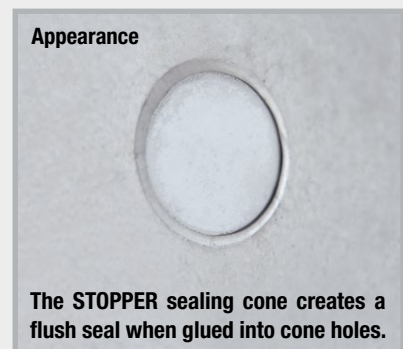
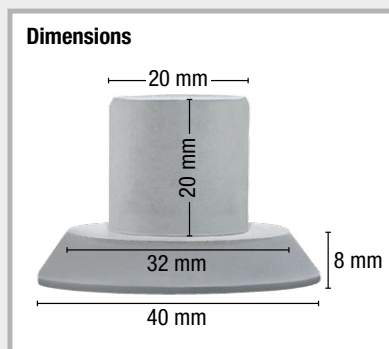
Pressurised water test up to 70 m water column

STOPPER sealing cone

Fibre cement cone for bonding for a visually appealing distance tube closure

Art.Gr.
610

- For distance tubes Ø 22 mm
- Cone height 8 mm
- Building material class A1 – non-combustible
- Colour: cement grey



Bonding options

Concrete adhesive for gluing into the cone holes can be found in product group 3 on page 94 in our full catalogue. The single-component PROTECT Easy 1K and the two-component PROTECT BK 2K have been specifically developed for this application.



PROTECT Easy 1K (Art. no. 040030)



PROTECT BK 2K (Art. no. 040100)

RONDO MINI



Sealing collars for waterproofing of plastic or fibre cement distance tubes

Art.Gr. 630

RONDO MINI sealing collars can be mounted onto plastic or fibre cement distance tubes quickly and easily at the construction site.

- Pressure test performed by MFPA Leipzig
- Easy and safe installation
- Good chemical resistance
- Very cost-effective
- Push on, fasten and tight

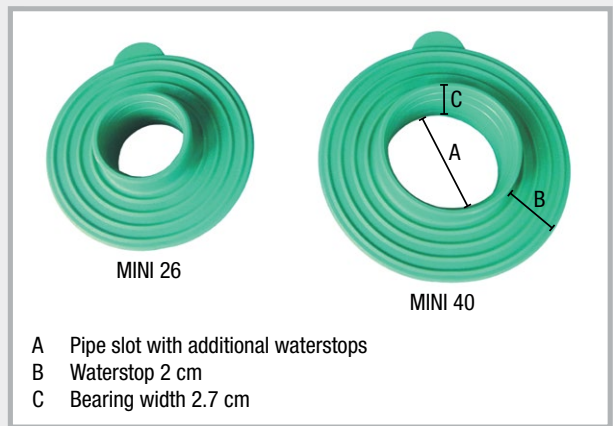
Resistance

- Diluted acids + alkalis
- Liquid manure + slurry
- Fermentation mash
- Oils and bitumen
- Radon + methane gas

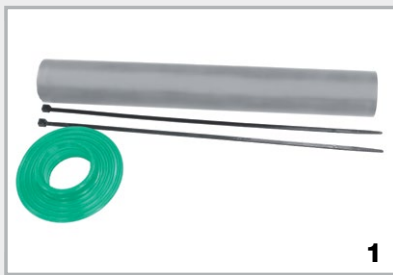


Product description

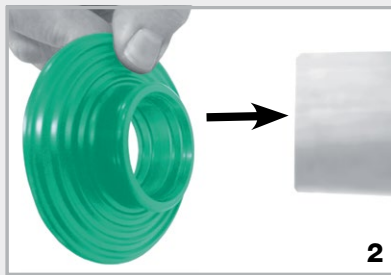
Material: TPE polymer compound
 Installation: Temperature range -35°C to +70°C



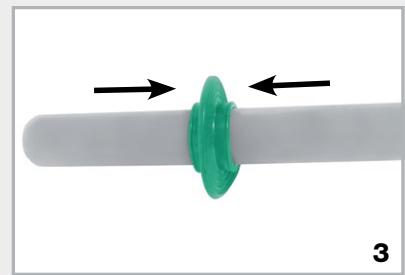
Quick and easy installation



Fibre cement distance tube, RONDO MINI, 2 fastening straps



Slide the RONDO MINI onto the distance tube



Position RONDO MINI in the centre before fastening



Tighten both fastening straps by hand



The fastening straps can also be tightened using pliers



RONDO MINI installation complete

ActiveRing

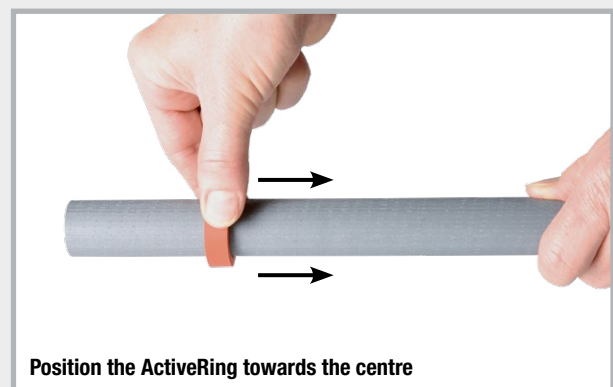
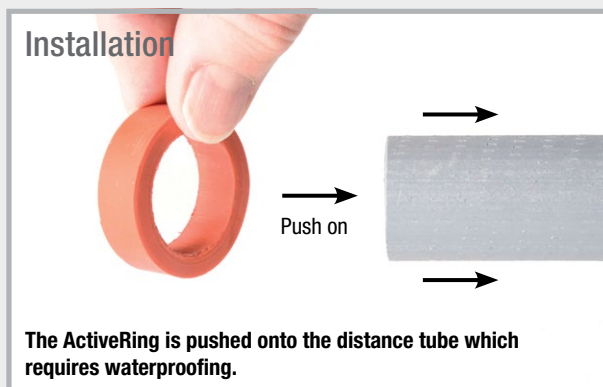


The swelling external high-pressure seal for plastic and fibre cement distance tubes

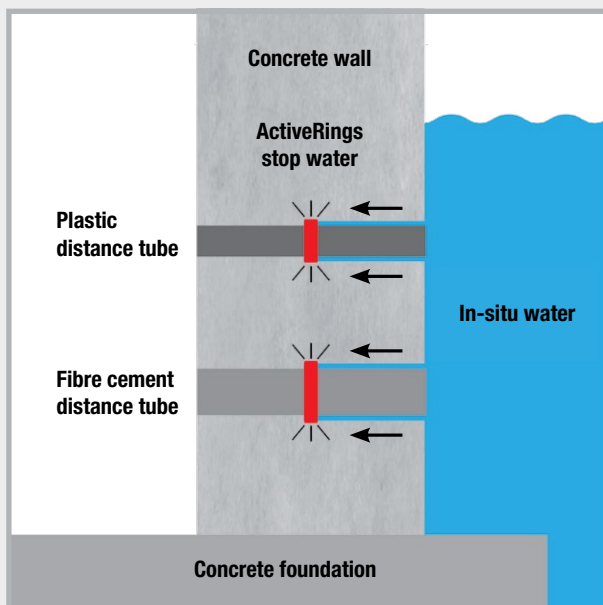
Art.Gr.
620

The ActiveRings mini and maxi are made of a highly swellable TPE mixture. When the rings come into contact with water, they activate, swell up and reliably stop the flow of water.

- Pressure test performed by MFPA Leipzig
- Easy and safe installation
- Good chemical resistance
- Very cost-effective
- Push on and seal



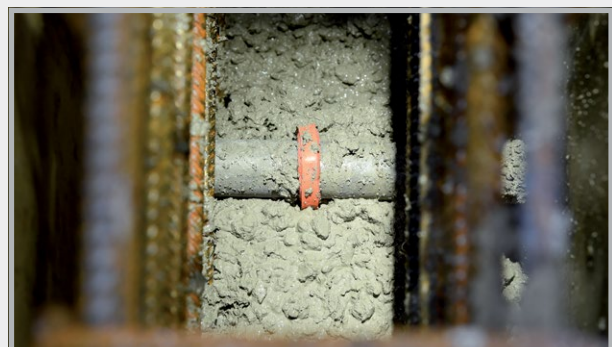
ActiveRings provide security



This is how ActiveRings work: When the rings come into contact with water, they activate, swell up and the resultant swell pressure stops the flow of water and provides a reliable seal. The seal remains permanently active when in contact with water.

Resistance

- Diluted acids and alkalis
- Salt water
- Methane gas + radon
- Liquid manure + slurry
- Fermentation mash + biogas
- Concrete alkalinity
- Liquid aggressive to concrete



At the construction site

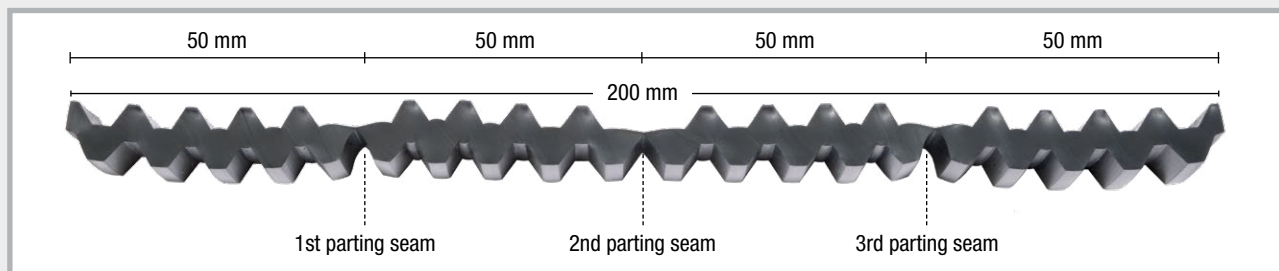
Corrugated bearing



Product description

Material: The corrugated bearing is a profiled bearing based on EPDM.

Application: For bearing of stairs and slabs
Bearing of prefabricated elements



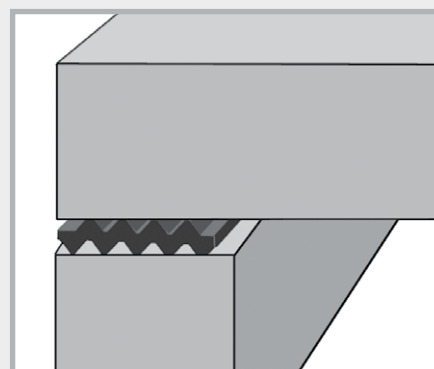
Description: Rolls

Testing: Load test up to 5 N/mm²
Impact sound reduction up to 20 dB

Temperature resistance: -40°C to +90°C

Elongation at break: >300%

Environmental aspects: UV-resistant, halogen-free



Corrugated bearing between two constructional elements

Application



Corrugated bearing



The corrugated bearing can be cut with a cutter. Cut into the parting seam, the corrugated bearing can then be processed.



Over a width of 20 cm the corrugated bearing has 3 parting seams. This enables bearing widths of 5, 10, 15 and 20 cm.

Impact sound insulation T1



Product description

Material: The impact sound insulation bearing T1 is made of fine mixed elastomer fibres bonded with PUR.

Application: As bearing for stairs and slabs

Description: Rolls, strips and boards

Testing: Load test for thickness 10 mm
up to 5 N/mm²

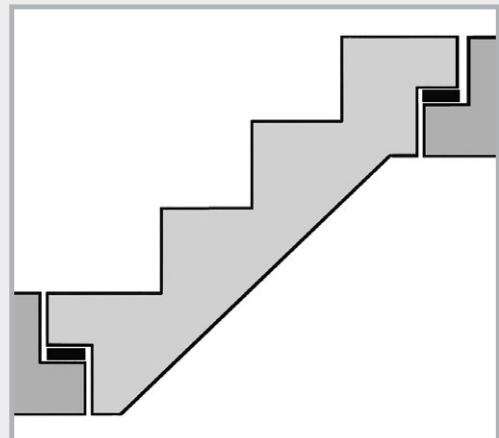
Impact sound
reduction up to 19 dB

**Temperature
resistance:** -40°C to +90°C

Elongation at break: >70%

Reaction to fire: Class E

**Environmental
aspects:** UV-resistant



Impact sound insulation T1, e.g. for bearing of staircases

Construction bearing R1

Product description

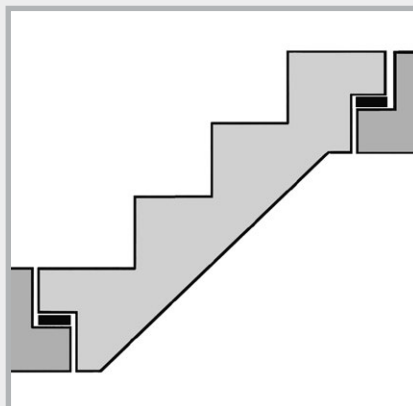
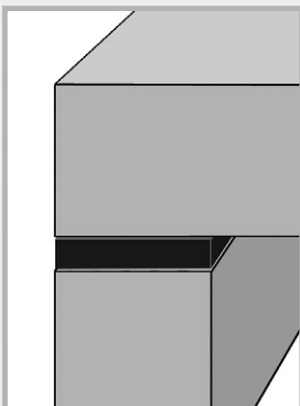
Material: NR-SBR copolymer

Application: Separation of 2 construction elements
Bearing of staircases
Levelling out of unevenness

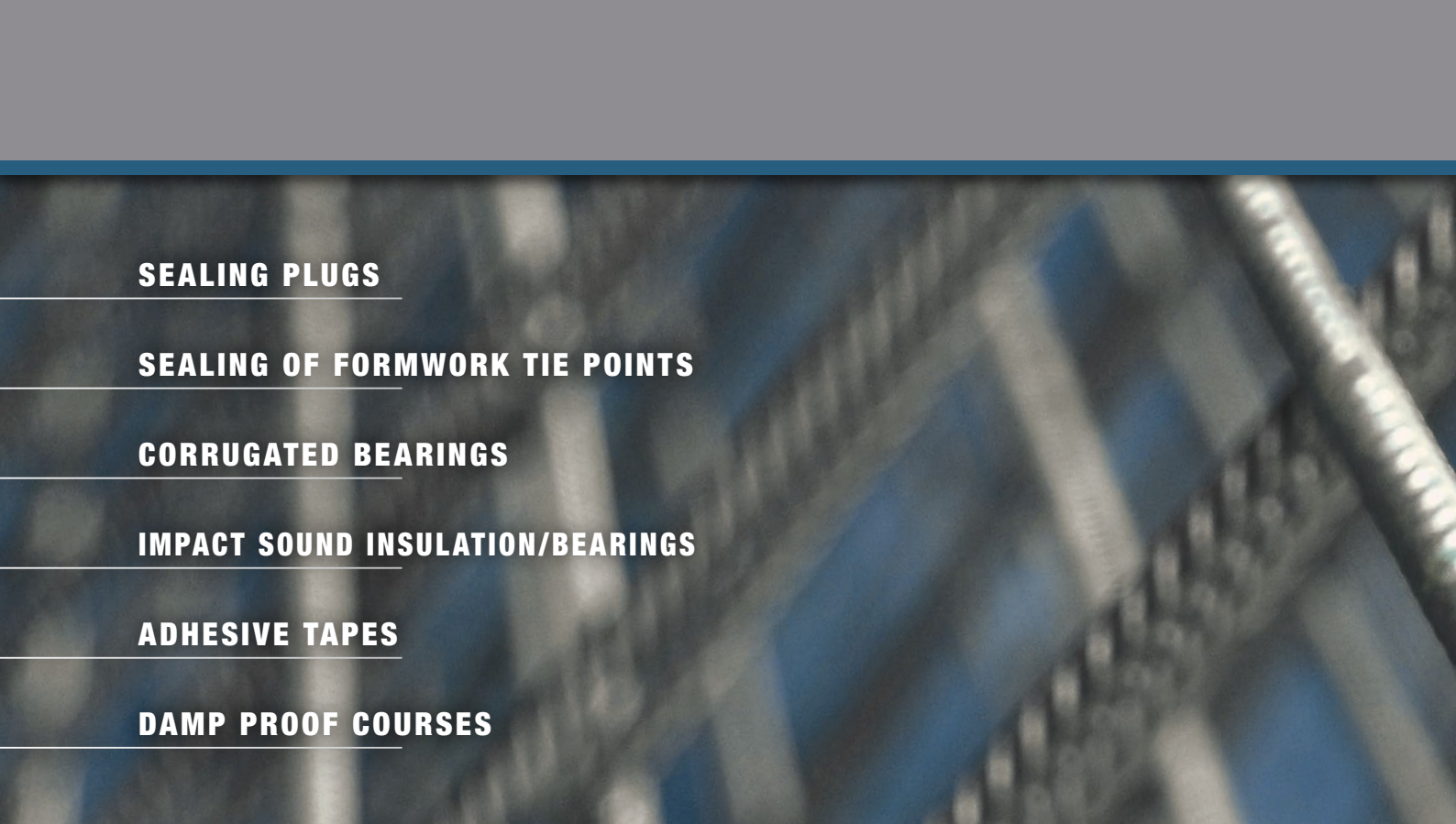
Description: Strips, boards + rolls

**Temperature
resistance:** -25°C to +70°C

Elongation at break: >200%



Ceiling installation



SEALING PLUGS

SEALING OF FORMWORK TIE POINTS

CORRUGATED BEARINGS

IMPACT SOUND INSULATION/BEARINGS

ADHESIVE TAPES

DAMP PROOF COURSES

MASTERTEC GmbH & Co. KG
Special articles for reinforced concrete construction

Gewerbegebiet Unterhaid
Im Maintal 13
96173 Oberhaid, Germany
Tel. +49 (0) 9503 / 5047-0

info@mastertec.eu
www.mastertec.eu