

РЪКОВОДСТВО ЗА ИНСТАЛИРАНЕ

MASTERTUBE Жълт (gelb)

PVC инжекционен маркуч за уплътняване на строителни фуги

номер на статията: 030400

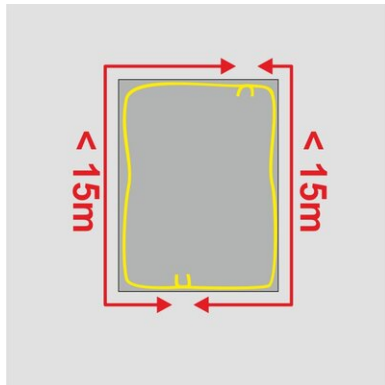


[Покажи продукта](#)



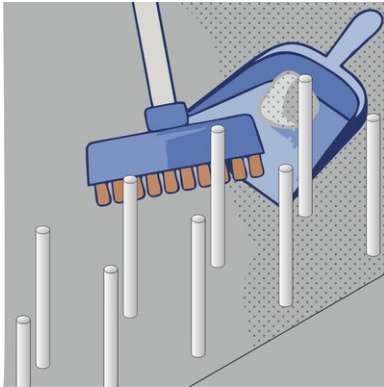
Ръководство за инсталиране:

Installation of injection hose



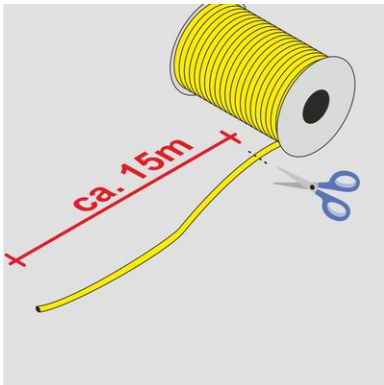
The injection hose **MASTERTUBE "YELLOW"** serves as internal waterproofing of construction joints.

- The length of the hose sections must not exceed 15 m. Shorter injection hose sections facilitate later injection.
- The injection hose is installed in the centre of the construction joint or – in case of constructional elements with a thickness of > 60 cm – at a distance of 15 cm from the water-remote side of the structure.
- Ensure a distance of 8 cm from the edge on all sides.



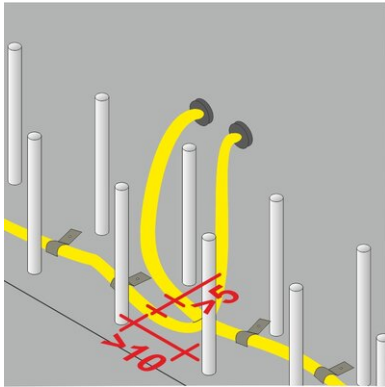
The concrete surface which the **MASTERTUBE** “**YELLOW**” is to be installed on must be as follows:

- clean and free from cavities
- free from loose particles and cement slurry
- free from release agents or other components that are separating or interfering with the adhesive bond
- free from ice and standing water



MASTERTUBE “**YELLOW**” is supplied as rolls of 100 m length.

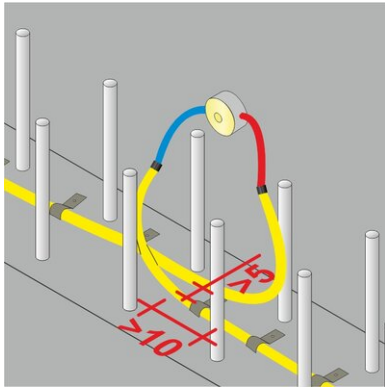
Cut the hose with a suitable cutting tool. Prior to cutting, mask the cutting section with 2 – 3 wraps of filament tape, which prevents the hose from tearing in longitudinal direction.



Fastening packers are screwed into the ends of the injection hose sections up to the thread end and fixed to the formwork surface. The position of the fastening packer should ensure permanent accessibility (floor structure and Technical Building Equipment must be taken into consideration). The fastening packers have closure plugs in 2 different colours. These are used for marking of the pairs used for the individual hose sections.

Successive injection hose sections must overlap by at least 10 cm to ensure continuous injection of the joint. The distance between parallel injection hoses must be min. 5 cm. Otherwise during injection of one hose section, the adjacent hose section might accidentally be filled as well.

If the distance of 5 cm cannot be provided in any subsection, this part of one of the hoses needs to be completely wrapped with filament tape in order to prevent accidental injection.

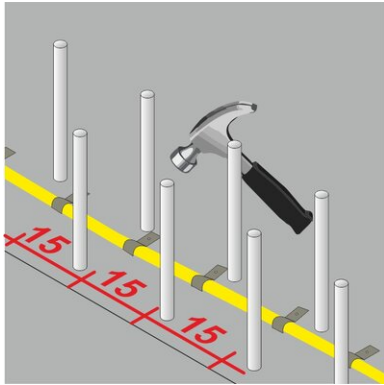


Alternatively, you may use injection end pieces instead of the fastening packers. These are 50 cm long unslit hoses with fabric sheath. By use of hose connectors the injection end pieces are screwed into the ends of the injection hose sections up to the thread. Fixing to the formwork surface is done by use of storage boxes, which the injections end pieces are led into and stored until later injection. The connection point between injection hose and injection end piece must be surrounded on all sides by at least 10 cm of concrete.

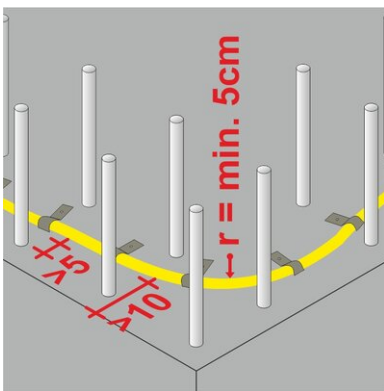
The position of the storage box should ensure permanent accessibility (floor structure and Technical Building Equipment must be taken into consideration). The injection end pieces are available in 2 different colours. These are used for marking of the pairs used for the individual hose sections.

Successive injection hose sections must overlap by at least 10 cm to ensure continuous injection of the joint. The distance between parallel injection hoses must be min. 5 cm. Otherwise during injection of one hose section, the adjacent hose section might accidentally be filled as well.

If the distance of 5 cm cannot be provided in any subsection, this part of one of the hoses needs to be completely wrapped with filament tape in order to prevent accidental injection

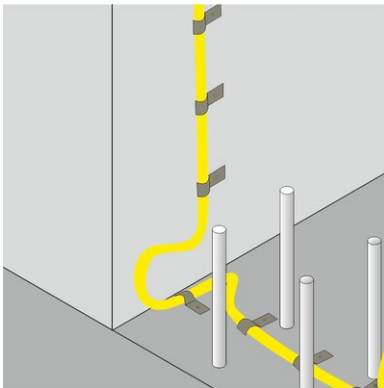


MASTERTUBE "YELLOW" must be fixed in such a way that it cannot shift neither before nor during concreting. It can be fastened by using metal clips or plastic fastening clips. The distance between either type of clips must not be more than 15cm in longitudinal direction. On very uneven surfaces and at each change of direction, the distance should be halved.



Changes of direction must be carried out with a sufficient bending radius in order to avoid damage to the hose or an obstruction of the overall injection.

The radius must be minimum 5 cm.



When changing between horizontal and vertical installation direction, the injection hose must be routed right into the corner of the joint and routed upwards via a loop. The minimum radius as well as the concrete cover need to be observed.

Injection

Injection of MASTERTUBE “YELLOW” is possible once the concrete has cured, 28 days after concreting at the earliest.

During injection the DBV code of practice: “Injection hose systems and swellable linings for construction joints” must be observed.

Status: 23.03.2022

Акcesoари

Уплътнител за закрепване

Закрепващият пакер MASTERTEC дава възможност инжекционният маркуч да бъде закрепен директно към кофража. Пакерът за закрепване по...

Пластмасова скоба за закрепване тип А

Закрепваща скоба за защитен от плаване монтаж на инжекционни маркучи върху бетонни повърхности ...

Основа

Всички размери и информация в този лист с данни отразяват резултатите от проведените лабораторни тестове. Възможни са отклонения от стойностите, определени от нас в лабораторни условия, поради условия на околната среда и експлоатация извън нашия контрол. Данните в този информационен лист се отнасят само за доставения от нас продукт. Данните за продукта съответстват само на спецификациите в Германия. Възможните отклонения от спецификациите в отделните страни не са взети предвид тук.

Посочване на закона

Техническата информация отразява текущите ни познания за MASTERTUBE Жълт (gelb). Той е предназначен само за информация на потребителите. Тъй като не познаваме предвидените приложения и условия на обработка, отговорност на потребителя е да провери внимателно дали продуктът е подходящ за предвидените цели. Поради различните компоненти на мястото на инсталиране и условията на работа там, MASTERTEC не може да предостави каквато и да е гаранция за резултата от работата. Искове, произтичащи от някакви правни отношения, могат да бъдат признати само в случай на умисъл или груба небрежност, независимо от направените тук изявления или устно предоставени съвети. В този случай потребителят трябва да докаже, че своевременно е предоставил на MASTERTEC в писмен вид цялата информация, необходима за правилна оценка на ситуацията при монтажа. В зависимост от необходимите продуктови спецификации или допълнителни разработки. Предоставяйки тази информация, MASTERTEC не възнамерява да нарушава правата на трети лица. Във всеки отделен случай се прилага последният информационен лист. Прилагат се нашите съответни условия за продажба и доставка.

Прецизиите информационни листове вече не са валидни

Дата на отпечатване 30.06.2024