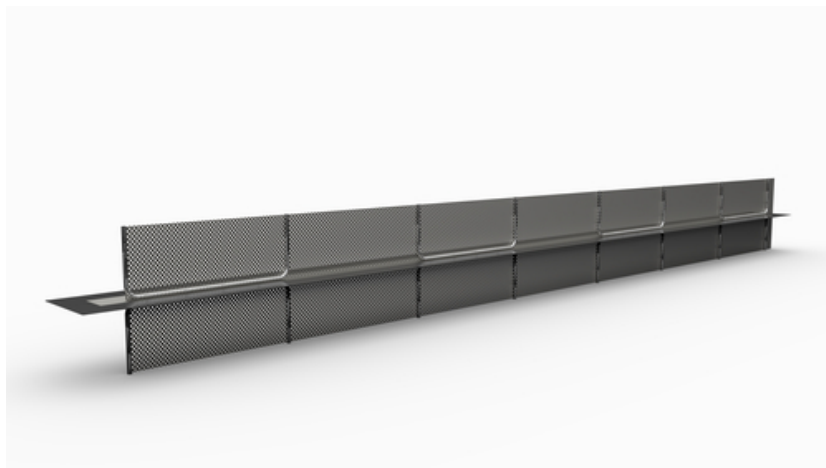


## Data sheet

### ABS 250 stopend panel - coated sheet - rough

for wall and foundation shuttering - Typ rough | height: 210 - 250 mm



[Show product](#)



article number:	070287
article group:	207 - Dichtblech Abschalelemente (S+V)
GTIN:	4251689511936
customs tariff number:	73269098
packing unit:	pc
sales quantity unit:	2.5 m
weight per:	pc = 8 kg
material:	St 37, galvanized special coating: polymer resin fabric-reinforced
colour:	black
length of joint sheet metal:	2.50 m
height of joint sheet metal:	160 mm
width perforated plate:	210 - 250 mm
thickness of joint sheet metal:	approx. 0.6 mm
thickness of special coating:	approx. 0.15 mm
total thickness:	approx. 0.9 mm
test certificate / approvals:	Test report MFPA Leipzig
suitable for zones with frequently varying water levels :	Yes
corresponds to:	Utility class A for the wear classes 1 and 2 in accordance with the WU guideline
packaging:	on disposable pallets, wrapped in foil
Substances according to the SVHC list contained or proportional weight $\geq 0.1\%$ :	No
conform to REACH guideline:	Yes

thermal scope of application: - 20°C to + 90°C

---

waterpressuretightness: Up to max. 6 bar (60 m water column)

---

storage: Store in undamaged and unopened original packaging in a dry place out of direct sunlight.

---

disposal: Can be disposed of at municipal waste landfill sites, taking into account the local waste disposal regulations.

---

## Basis

All dimensions and information in this data sheet reflect the results of the laboratory tests that have been carried out. Deviations from the values determined by us under laboratory conditions are possible due to environmental and operating conditions beyond our control. The data in this data sheet only applies for the product delivered by us. The product data corresponds only to the specifications in Germany. Possible country-specific deviations are not taken into account here.

## Lifetime

The useful life of buildings is designed for 50 years, and so are the products that are installed. However, this can be shortened by external influences. The expected lifetime of our products depends to a large extent on the installation location (e.g. buried installation, damp environment, offshore, etc.). In addition, there are external influences such as exposure to chemical influences (e.g. acids, aggressive media, aqueous solutions, industrial waste water, oils, etc.) and ambient temperatures / operating temperatures. Ultimately, no generally valid statement can be made about the guaranteed service life of our MASTERTEC products, as this depends on many parameters (use, environmental influences, installation requirements, safety regulations, etc.). To ensure safe operation, we recommend continuous testing of the product, as part of an operating and maintenance manual to be prepared by the customer in accordance with the safety requirements.

## Indication of law

The technical information reflects our current knowledge of ABS 250 stopend panel - coated sheet -rough. It is intended only as information for users. As we do not know the envisaged applications and processing conditions, it is the responsibility of the user to carefully check that the product is suitable for the intended purposes. Due to the different components at the installation site and the working conditions in place there, MASTERTEC cannot provide any guarantee whatsoever for the result of the work. Claims arising from any legal relationship can only be recognised in the event of wilful intent or gross negligence, irrespective of the statements made here or advice provided verbally. In this case the user must prove that he has provided MASTERTEC in writing with all the information required to correctly assess the installation situation in good time. Subject to necessary product specifications or further

developments. By providing this information MASTERTEC does not intend to infringe third party rights. The latest data sheet in each case applies. Our corresponding terms and conditions of sale and delivery apply.

## **The previous data sheets are no longer valid**

Print date 03.07.2024 , last modified 02.05.2023