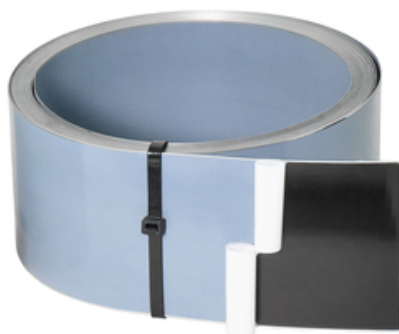


Installation tutorial

Joint sheet metal roll 120 VB2

both sides fully coated

article number: 070464



[Show product](#)



Installation tutorial:



Remove the bottom half of the parted protective foil from the special coating.



Place the **VB joint sheet metal** in the centre of the rising wall on top of the upper reinforcement layer.

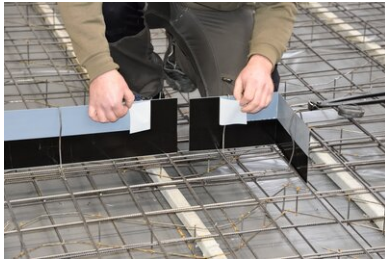
Push the mounting brackets with a maximum distance of 70 cm over the sheet metal and fix them to the upper reinforcement layer with binding wire.

The embedment depth in the concrete must be at least 3 cm and must not be more than half the height of the sheet metal.

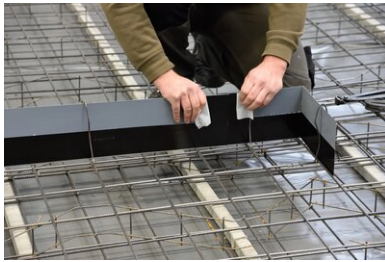
PLEASE NOTE!! The coating of the joint sheet metal VB1 must face the waterlogged side!



The **VB joint sheet metal** must overlap by at least 6 cm in the area of the joint, in the straight sections and also in the corner area.



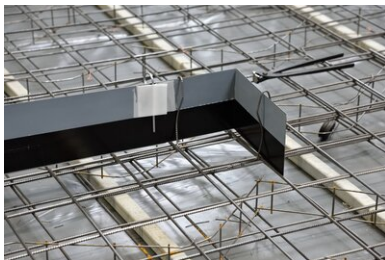
To do so, the upper protective foil must be turned back in the area subsequently to be joined.



Overlap the **VB joint sheet metal** by at least 6 cm and press the two ends firmly together.

The joint must be glued over its full height and entire surface to prevent subsequent water permeation.

There must be no contamination on the adhesive surfaces that could interfere with bonding.



Secure the joint with one of the fixing clips provided and fold the protective foil back onto the special coating.



Prepared joints in the straight sections as well as the corner area.

Once the foundation slab has been concreted, and before the wall formwork is closed or the double wall elements have been set up, the remaining protective foil must be removed.

The concreting of the wall base and corresponding preparations must be carried out in accordance with the established technical standards.

Status: 23.03.2022

Seite 4 von 5

QUELLBÄNDER · FUGENBLECHE · INJEKTIONSSCHLÄUCHE | BAUCHEMIE · DRUCKWASSERDICHTHE HAUSEINFÜHRUNGEN · BLITZSCHUTZ · SCHALUNGSZUBEHÖR

MASTERTEC GmbH & Co. KG
Gewerbegebiet Unterhaid
Im Maintal 13
D-96173 Oberhaid
Ust.-Id.Nr.: DE 812533130

Tel.: +49 (0) 9503 5047-0
Fax: +49 (0) 9503 5047-20
info@Mastertec.eu
www.Mastertec.eu
EORI-Nr.: DE 4774124

Kommanditgesellschaft:
HRA 9888, Sitz Oberhaid
Komplementär: BBV Bau-
Vertriebs-Verwaltungs GmbH,
HRB 3636, Sitz Oberhaid
Amtsgericht Bamberg

Geschäftsführer:
Rainer Kropfelder
Dipl.-Kffr. Gabriele Kropfelder
Felix Kropfelder
Jakob Kropfelder, B.Sc.

Bankverbindung:
Sparkasse Bamberg
IBAN: DE24 7705 0000 0810 3458 84
BIC: BYLADEM1 SKB

Basis

All dimensions and information in this data sheet reflect the results of the laboratory tests that have been carried out. Deviations from the values determined by us under laboratory conditions are possible due to environmental and operating conditions beyond our control. The data in this data sheet only applies for the product delivered by us. The product data corresponds only to the specifications in Germany. Possible country-specific deviations are not taken into account here.

Indication of law

The technical information reflects our current knowledge of Joint sheet metal roll 120 VB2. It is intended only as information for users. As we do not know the envisaged applications and processing conditions, it is the responsibility of the user to carefully check that the product is suitable for the intended purposes. Due to the different components at the installation site and the working conditions in place there, MASTERTEC cannot provide any guarantee whatsoever for the result of the work. Claims arising from any legal relationship can only be recognised in the event of wilful intent or gross negligence, irrespective of the statements made here or advice provided verbally. In this case the user must prove that he has provided MASTERTEC in writing with all the information required to correctly assess the installation situation in good time. Subject to necessary product specifications or further developments. By providing this information MASTERTEC does not intend to infringe third party rights. The latest data sheet in each case applies. Our corresponding terms and conditions of sale and delivery apply.

The previous data sheets are no longer valid

Print date 03.07.2024