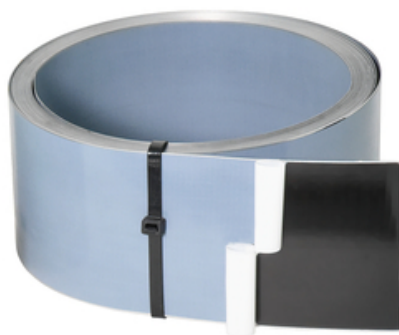


Data sheet

Joint sheet metal roll 120 VB2 on both sides fully coated - o.O.

fully coated on both sides



[Show product](#)



article number:	070467
article group:	213 - Dichtblech VB Rollen h = 80, 120, 240 mm
GTIN:	4251689507366
customs tariff number:	73269098
packing unit:	Roll
sales quantity unit:	20 m
material:	St 37, galvanized special coating: polymer resin fabric-reinforced
colour:	black
height of joint sheet metal :	120 mm
thickness of joint sheet metal:	approx. 0,6 mm
thickness of special coating:	approx. 0,15 mm
total thickness:	approx. 0,9 mm
test certificate / approvals:	Test report PB 5.1/15-146-2 MFPA Leipzig
suitable for zones with frequently varying water levels:	yes
corresponds to:	Utility class A for the wear classes 1 and 2 in accordance with the WU guideline
Substances according to the SVHC list contained or proportional weight $\geq 0.1\%$:	no
conform to REACH guideline:	yes

UV weathering:

Joint sheet metal which has been installed during the first construction stage already must not be exposed to free UV weathering for more than 4 weeks until completely cast in concrete. If construction is interrupted for a prolonged period, the joint sheet metal must be especially protected against UV radiation (dark foils etc.) in order to preserve usability.

packaging:	carton (40 x 40 x 20 cm) 1 roll 2 fixing clips 48 cartons per pallet
thermal scope of application:	- 20°C to + 90°C
waterpressuretightness:	Up to max. 6 bar (60 m water column)
storage:	Store in undamaged and unopened original packaging in a dry place out of direct sunlight.
disposal:	Can be disposed of at municipal waste landfill sites, taking into account the local waste disposal regulations.

Basis

All dimensions and information in this data sheet reflect the results of the laboratory tests that have been carried out. Deviations from the values determined by us under laboratory conditions are possible due to environmental and operating conditions beyond our control. The data in this data sheet only applies for the product delivered by us. The product data corresponds only to the specifications in Germany. Possible country-specific deviations are not taken into account here.

Indication of law

The technical information reflects our current knowledge of Joint sheet metal roll 120 VB2 on both sides fully coated - o.O.. It is intended only as information for users. As we do not know the envisaged applications and processing conditions, it is the responsibility of the user to carefully check that the product is suitable for the intended purposes. Due to the different components at the installation site and the working conditions in place there, MASTERTEC cannot provide any guarantee whatsoever for the result of the work. Claims arising from any legal relationship can only be recognised in the event of wilful intent or gross negligence, irrespective of the statements made here or advice provided verbally. In this case the user must prove that he has provided MASTERTEC in writing with all the information required to correctly assess the installation situation in good time. Subject to necessary product specifications or further developments. By providing this information MASTERTEC does not intend to infringe third party rights. The latest data sheet in each case applies. Our corresponding terms and conditions of sale and delivery apply.

The previous data sheets are no longer valid

Print date 20.05.2024 , last modified 28.11.2023