

Installation tutorial

FIX 150 formwork aid

for lining pipes ID 149 - 154 mm and socket of sewage pipes DN160

article number: 090818

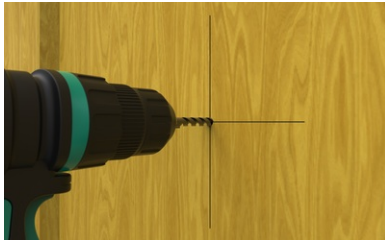
[Show product](#)



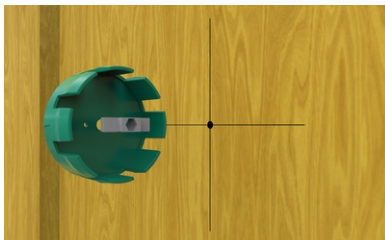
Installation tutorial:

MASTERTEC GmbH & Co.KG

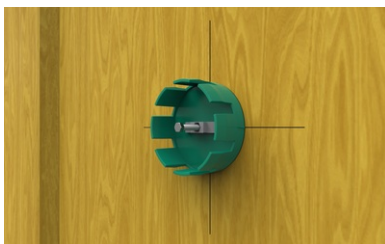
Installing instruction for FIX formwork aid - using the FIX screw adapter



Mark the position of the pipe on the formwok and drill an Ø8mm hole in the center.



Insert the **FIX screw adapter** into the **FIX formwork aid** and press it in firmly.



Attach the **FIX formwork aid** to the desired position on the formwork.

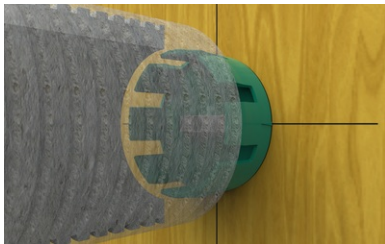
For better orientation and easier positioning, there are markings on the sides of the formwork aid.

Then insert the screw of the **FIX screw adapter** and guide it through the hole in the formwork.

Press the screw firmly into the screw adapter.



Secure the **FIX formwork aid** from the outside of the formwork using the washer and wing nut.



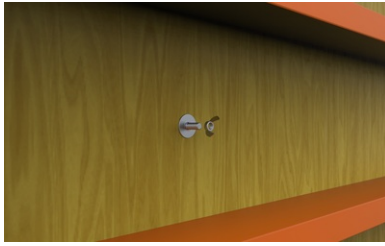
Place the lining pipe or the wall penetration on the **FIX formwork aid**.



The pipe is then pushed onto the formwork aid until it rests against the formwork.
The clamping force of the claw is holding the pipe in position.



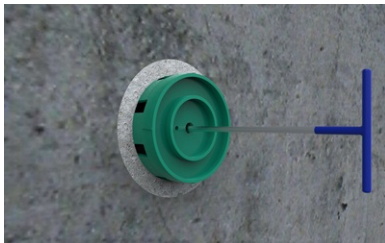
The reinforcement can then be laid, the second formwork placed and the wall concreted.



After concreting, the wingnut and washer are removed and set aside.



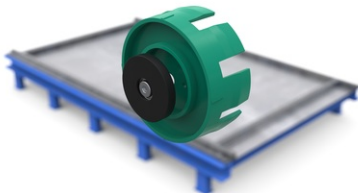
The screw can easily be pushed into the pipe by using a hammer.

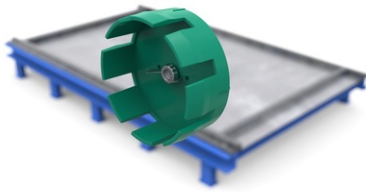


After removing the formwork, the formwork **FIX formwork aid** can be pulled out by using the **FIX removal aid** and the screw can be removed from the pipe.

Installation instruction FIX Formwork aid with the FIX Magnet Systems

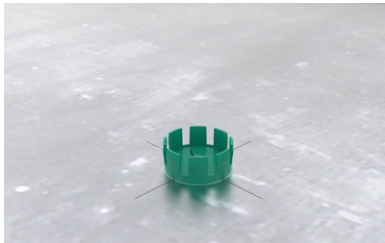
Insert the **FIX Magnet** into the **FIX Formwork aid**.





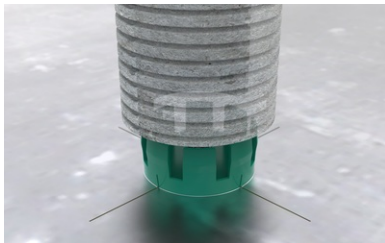
On the opposite side, secure the **FIX Magnet** with the supplied wing nut.

If necessary, the screw in the magnet must be held with an allen key.



Attach the **FIX formwork aid** to the desired position on the steel formwork.

For better orientation and easier positioning, there are markings on the sides of the formwork aid.

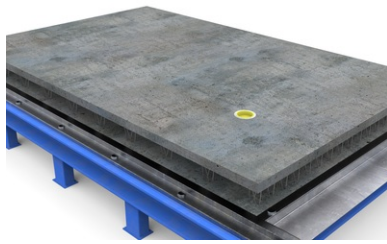


Place the lining pipe or the wall penetration on the **FIX formwork aid**.

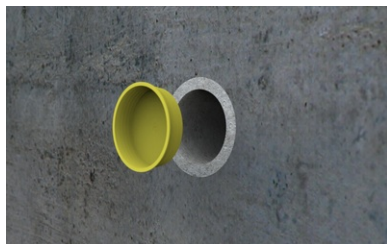


The pipe is then pushed down onto the formwork aid until it rests against the formwork.

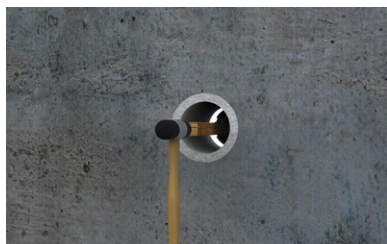
The clamping force of the claw and the magnet prevent the pipe from shifting in position.



After that, the reinforcement can be laid and the two shells concreted.

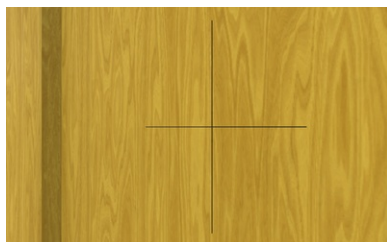


After setting up the finished wall part, the construction period cover is removed first (if installed)

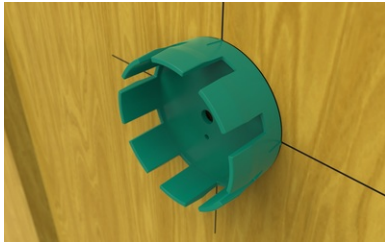


After that, the **FIX formwork aid** can be pushed out.

Installation instruction FIX formwork aid, attached with nails

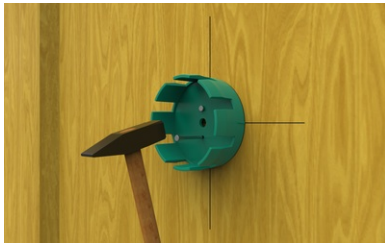


Mark the position of the pipe on the formwork



Attach the **FIX formwork aid** to the desired position on the formwork.

For better orientation and easier positioning, there are markings on the sides of the formwork aid.



Then attach the **FIX formwork aid** to the formwork, using nails through the provided holes.



Place the lining pipe or the wall penetration on the **FIX formwork aid**.

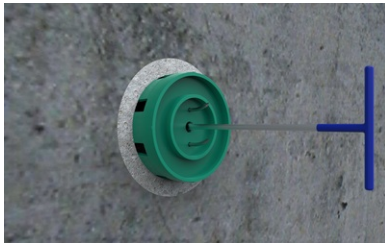


The pipe is then pushed onto the formwork aid until it rests against the formwork.

The clamping force of the claw is holding the pipe in position.



The reinforcement can then be laid, the second formwork placed and the wall concreted.



After removing the formwork, the formwork **FIX formwork aid** can be pulled out by using the **FIX removal aid**.

Stand: 23.04.2024

Accessories

FIX screw adapter set

...

**FIX Magnet for
formwork aid**

suitable for all FIX formwork
aids ...

Basis

All dimensions and information in this data sheet reflect the results of the laboratory tests that have been carried out. Deviations from the values determined by us under laboratory conditions are possible due to environmental and operating conditions beyond our control. The data in this data sheet only applies for the product delivered by us. The product data corresponds only to the specifications in Germany. Possible country-specific deviations are not taken into account here.

Indication of law

The technical information reflects our current knowledge of FIX 150 formwork aid. It is intended only as information for users. As we do not know the envisaged applications and processing conditions, it is the responsibility of the user to carefully check that the product is suitable for the intended purposes. Due to the different components at the installation site and the working conditions in place there, MASTERTEC cannot provide any guarantee whatsoever for the result of the work. Claims arising from any legal relationship can only be recognised in the event of wilful intent or gross negligence, irrespective of the statements made here or advice provided verbally. In this case the user must prove that he has provided MASTERTEC in writing with all the information required to correctly assess the installation situation in good time. Subject to necessary product specifications or further developments. By providing this information MASTERTEC does not intend to infringe third party rights. The latest data sheet in each case applies. Our corresponding terms and conditions of sale and delivery apply.

The previous data sheets are no longer valid

Print date 03.07.2024