

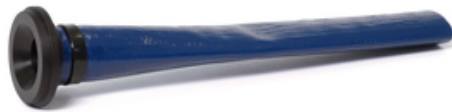
# Installation tutorial

## Flexible nozzle

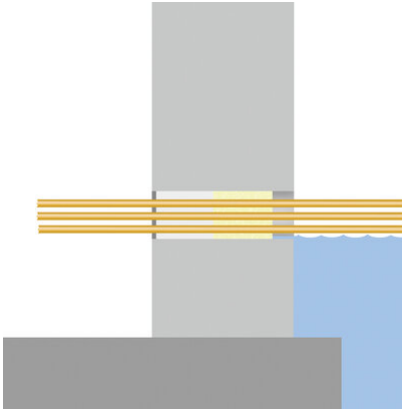
for cartridge applicator

article number: 120630

[Show product](#)



## Installation tutorial:



### Preparation:

The substrate must be free from grease, tar, oil and loose particles.

Suitable substrates are: concrete, brick, mortar, plaster and all other mineral construction materials, as well as ceramics, PVC, polyethylene and polypropylene.

Clean the inside of the duct using a suitable brush to remove dust, sand, and any loose particles.

**Prior to application, FLEX 2000 is warmed to approx. 35 - 40 °C by placing in hot water to ensure optimum consistency and workability**



### Installation:

Before applying **FLEX 2000**, a securing block of a two-component PUR foam is applied in the duct at a depth of approx. 15 cm.

The **FLEX 2000** cartridge is then inserted into the cartridge applicator and **FLEX 2000** paste injected into the annular gap of the two-component securing block, starting at the back and working towards the front. The layer must be at least 12 cm thick.

After sealing cable ducts, jiggle the cables slightly and fill any cavities with **FLEX 2000**.

Always ensure that the cable is free of tension and strain after sealing. The sealing compound is then pressed in firmly and smoothed with a metal filler knife leaving a depression approx. 1 cm deep, which is sealed with fast-curing cement to additionally secure the mouth of the duct.

To feed through a new cable, the mortar cap is removed and the cable is pushed through the sealing compound. The duct is then re-sealed using **FLEX 2000**.

### Inflicting water



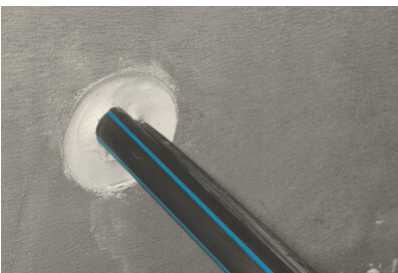
Insert the flexible nozzle into the duct and seal it with **FLEX 2000** starting from the securing block.



Fill the duct slowly spirally from the center outwards with **FLEX 2000**.



Fill the duct completely with **FLEX 2000**.



Smooth down the **FLEX 2000** sealing compound with a spatula, set back approx. 1 cm.



Close the duct with fast-curing cement and smooth it flush with the surface.



# MASTERTEC

SPECIAL ARTICLES FOR REINFORCED CONCRETE CONSTRUCTION

Status: 23.03.2022

Page 5 of 7

HYDROPHILIC WATERSTOP · JOINT SHEET METAL · INJECTION HOSES | CONSTRUCTION CHEMISTRY · SERVICE DUCTS · LIGHTNING PROTECTION · FORMWORK ACCESSORIES

**MASTERTEC GmbH & Co. KG**  
Gewerbegebiet Unterhaid  
Im Maintal 13  
D-96173 Oberhaid  
Ust.-Id.Nr.: DE 812533130

**Tel.:** +49 (0) 9503 5047-0  
**Mail:** [info@mastertec.eu](mailto:info@mastertec.eu)  
**www.mastertec.eu**  
EORI-Nr.: DE 4774124

Kommanditgesellschaft:  
HRA 9888, Sitz Oberhaid  
Komplementär: BBV Bau-  
Vertriebs-Verwaltungs GmbH,  
HRB 3636 Sitz Oberhaid  
Amtsgericht Bamberg

**Managing directors:**  
Rainer Kropfelder  
Dipl.-Kffr. Gabriele Kropfelder  
Felix Kropfelder, B. Eng.  
Jakob Kropfelder, B. Sc.

**Bank details:**  
Sparkasse Bamberg  
IBAN: DE24 7705 0000 0810 3458 84  
BIC: BYLADEM1 SKB

## Basis

All dimensions and information in this data sheet reflect the results of the laboratory tests that have been carried out. Deviations from the values determined by us under laboratory conditions are possible due to environmental and operating conditions beyond our control. The data in this data sheet only applies for the product delivered by us. The product data corresponds only to the specifications in Germany. Possible country-specific deviations are not taken into account here.

## Lifetime

The useful life of buildings is designed for 50 years, and so are the products that are installed. However, this can be shortened by external influences. The expected lifetime of our products depends to a large extent on the installation location (e.g. buried installation, damp environment, offshore, etc.). In addition, there are external influences such as exposure to chemical influences (e.g. acids, aggressive media, aqueous solutions, industrial waste water, oils, etc.) and ambient temperatures / operating temperatures. Ultimately, no generally valid statement can be made about the guaranteed service life of our MASTERTEC products, as this depends on many parameters (use, environmental influences, installation requirements, safety regulations, etc.). To ensure safe operation, we recommend continuous testing of the product, as part of an operating and maintenance manual to be prepared by the customer in accordance with the safety requirements.

## Indication of law

The technical information reflects our current knowledge of the product Flexible nozzle. It is intended only as information for users. As we do not know the envisaged applications and processing conditions, it is the responsibility of the user to carefully check that the product is suitable for the intended purposes. Due to the different components at the installation site and the working conditions in place there, MASTERTEC cannot provide any guarantee whatsoever for the result of the work. Claims arising from any legal relationship can only be recognised in the event of wilful intent or gross negligence, irrespective of the statements made here or advice provided verbally. In this case the user must prove that he has provided MASTERTEC in writing with all the information required to correctly assess the installation situation in good time. Subject to necessary product specifications or further developments.



By providing this information MASTERTEC does not intend to infringe third party rights. The latest data sheet in each case applies. Our corresponding terms and conditions of sale and delivery apply.

**The previous data sheets are no longer valid**

Print date 22.07.2024