

Paigaldamise õpetus

MASTERTUBE kollane pikenduskomplekt-10 m

Valmis kokku pandud, mis koosneb järgmistest osadest:
10 m MASTERTUBE süstevoolik koos paigaldusmaterjaliga.

Artikli number: 030055

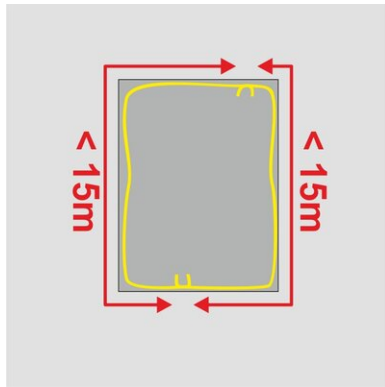


[Näita toodet](#)



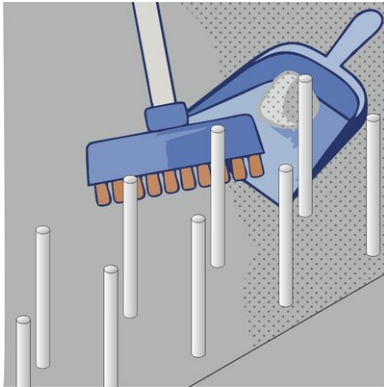
Paigaldamise õpetus:

Installation of injection hose



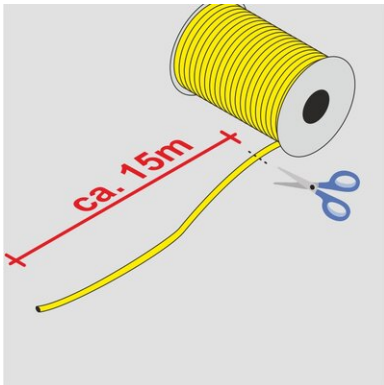
The injection hose **MASTERTUBE “YELLOW”** serves as internal waterproofing of construction joints.

- The length of the hose sections must not exceed 15 m. Shorter injection hose sections facilitate later injection.
- The injection hose is installed in the centre of the construction joint or – in case of constructional elements with a thickness of > 60 cm – at a distance of 15 cm from the water-remote side of the structure.
- Ensure a distance of 8 cm from the edge on all sides.



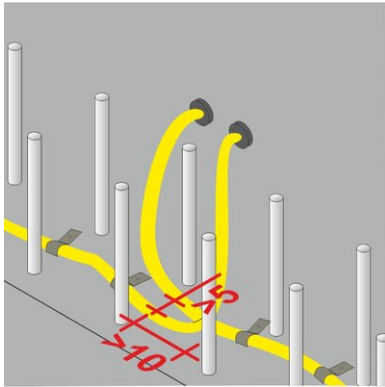
The concrete surface which the **MASTERTUBE** “**YELLOW**” is to be installed on must be as follows:

- clean and free from cavities
- free from loose particles and cement slurry
- free from release agents or other components that are separating or interfering with the adhesive bond
- free from ice and standing water



MASTERTUBE “**YELLOW**” is supplied as rolls of 100 m length.

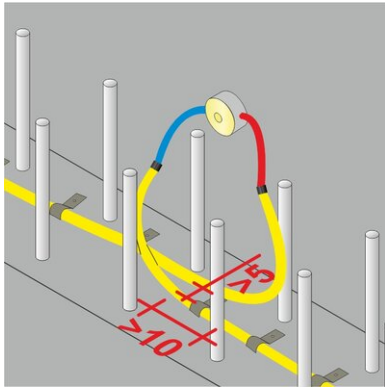
Cut the hose with a suitable cutting tool. Prior to cutting, mask the cutting section with 2 – 3 wraps of filament tape, which prevents the hose from tearing in longitudinal direction.



Fastening packers are screwed into the ends of the injection hose sections up to the thread end and fixed to the formwork surface. The position of the fastening packer should ensure permanent accessibility (floor structure and Technical Building Equipment must be taken into consideration). The fastening packers have closure plugs in 2 different colours. These are used for marking of the pairs used for the individual hose sections.

Successive injection hose sections must overlap by at least 10 cm to ensure continuous injection of the joint. The distance between parallel injection hoses must be min. 5 cm. Otherwise during injection of one hose section, the adjacent hose section might accidentally be filled as well.

If the distance of 5 cm cannot be provided in any subsection, this part of one of the hoses needs to be completely wrapped with filament tape in order to prevent accidental injection.

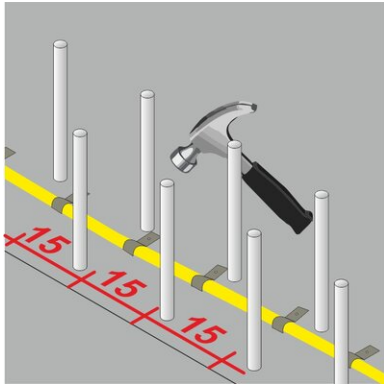


Alternatively, you may use injection end pieces instead of the fastening packers. These are 50 cm long unslit hoses with fabric sheath. By use of hose connectors the injection end pieces are screwed into the ends of the injection hose sections up to the thread. Fixing to the formwork surface is done by use of storage boxes, which the injections end pieces are led into and stored until later injection. The connection point between injection hose and injection end piece must be surrounded on all sides by at least 10 cm of concrete.

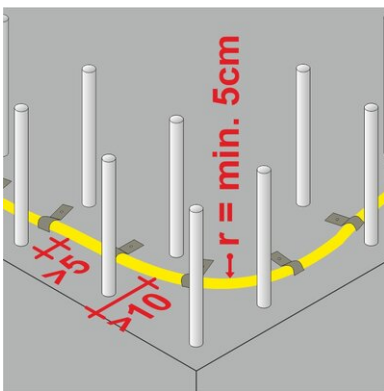
The position of the storage box should ensure permanent accessibility (floor structure and Technical Building Equipment must be taken into consideration). The injection end pieces are available in 2 different colours. These are used for marking of the pairs used for the individual hose sections.

Successive injection hose sections must overlap by at least 10 cm to ensure continuous injection of the joint. The distance between parallel injection hoses must be min. 5 cm. Otherwise during injection of one hose section, the adjacent hose section might accidentally be filled as well.

If the distance of 5 cm cannot be provided in any subsection, this part of one of the hoses needs to be completely wrapped with filament tape in order to prevent accidental injection

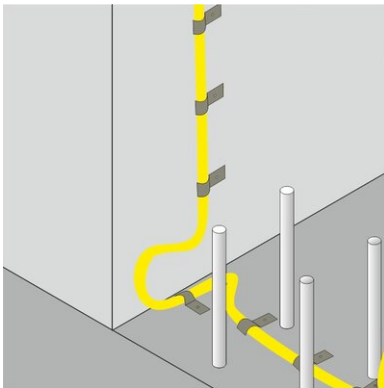


MASTERTUBE “YELLOW” must be fixed in such a way that it cannot shift neither before nor during concreting. It can be fastened by using metal clips or plastic fastening clips. The distance between either type of clips must not be more than 15cm in longitudinal direction. On very uneven surfaces and at each change of direction, the distance should be halved.



Changes of direction must be carried out with a sufficient bending radius in order to avoid damage to the hose or an obstruction of the overall injection.

The radius must be minimum 5 cm.



When changing between horizontal and vertical installation direction, the injection hose must be routed right into the corner of the joint and routed upwards via a loop. The minimum radius as well as the concrete cover need to be observed.

Injection

Injection of MASTERTUBE “YELLOW” is possible once the concrete has cured, 28 days after concreting at the earliest.

During injection the DBV code of practice: “Injection hose systems and swellable linings for construction joints” must be observed.

Status: 23.03.2022

Tarvikud

MC-Injekt 2300 Top -1 liitrine

Polüuretaanvaik voolikute ja
pragude süstimiseks ...

Alus

Kõik mõõtmed ja andmed käesolevas andmelehes kajastavad teostatud laborikatsete tulemusi. Meie poolt laboritingimustes kindlaks määratud väärtustest on võimalik kõrvalekaldumine, mis tuleneb keskkonna- ja töötingimustest, mis ei ole meie kontrolli all. Käesolevas andmelehes esitatud andmed kehtivad ainult meie poolt tarnitud toote kohta. Toote andmed vastavad ainult Saksamaal kehtivatele spetsifikatsioonidele. Võimalikke riigispetsifikseid kõrvalekaldeid ei ole siinkohal arvesse võetud.

Õigusakti märkimine

Tehniline teave kajastab meie praeguseid teadmisi MASTERTUBE kollane pikenduskomplekt-10 m. See on mõeldud ainult kasutajate teavitamiseks. Kuna me ei tea kavandatud rakendusi ja töötlemistingimusi, on kasutaja kohustus hoolikalt kontrollida, kas toode sobib ettenähtud otstarbeks. Seoses erinevate komponentidega paigalduskohas ja seal kehtivate töötingimustega ei saa MASTERTEC anda mingit garantiid töö tulemuse kohta. Igasugusest õigussuhtest tulenevaid nõudeid saab tunnustada ainult tahtliku kavatsuse või raske hooletuse korral, sõltumata siin esitatud väidetest või suuliselt antud nõuannetest. Sellisel juhul peab kasutaja tõendama, et ta on MASTERTECile kirjalikult esitanud kogu teabe, mis on vajalik paigaldussituatsiooni õigeaegseks hindamiseks. Vastavalt vajalikele tootespetsifikaatidele või edasistele arendustele. Käesoleva teabe esitamisega ei katse MASTERTEC rikkuda kolmandate isikute õigusi. Kohaldatakse iga juhtumi puhul viimast andmelehte. Kehtivad meie vastavad müügi- ja tarnetingimused.

Varasemad andmelehted ei ole enam kehtivad

Prindi kuupäev 30.06.2024