

# Paigaldamise õpetus

## FIX 125 sulgemisabi

mantelitorudele ID 124 - 129 mm ja KG torude muhvidele DN125

Artikli number: 090816

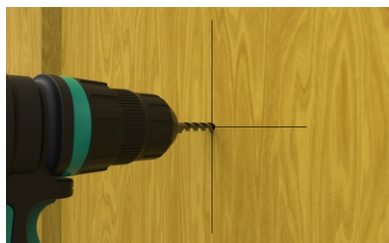
[Näita toodet](#)



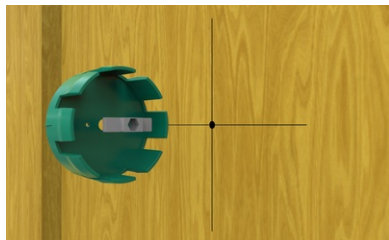
# Paigaldamise õpetus:

## MASTERTEC GmbH & Co.KG

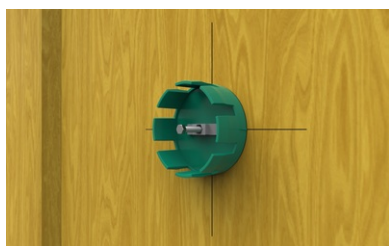
Installing instruction for FIX formwork aid - using the FIX screw adapter



Mark the position of the pipe on the formwok and drill an Ø8mm hole in the center.



Insert the **FIX screw adapter** into the **FIX formwork aid** and press it in firmly.



Attach the **FIX formwork aid** to the desired position on the formwork.

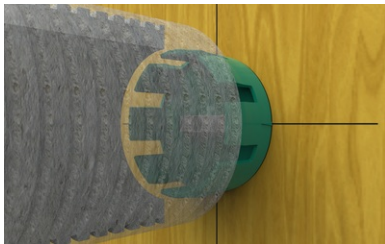
For better orientation and easier positioning, there are markings on the sides of the formwork aid.

Then insert the screw of the **FIX screw adapter** and guide it through the hole in the formwork.

Press the screw firmly into the screw adapter.



Secure the **FIX formwork aid** from the outside of the formwork using the washer and wing nut.



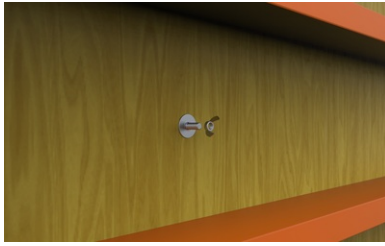
Place the lining pipe or the wall penetration on the **FIX formwork aid**.



The pipe is then pushed onto the formwork aid until it rests against the formwork.  
The clamping force of the claw is holding the pipe in position.



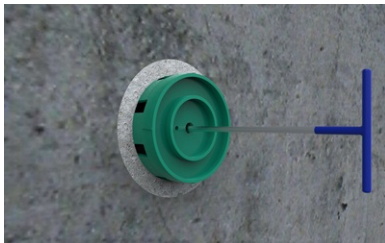
The reinforcement can then be laid, the second formwork placed and the wall concreted.



After concreting, the wingnut and washer are removed and set aside.



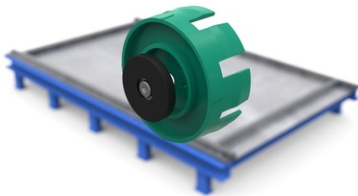
The screw can easily be pushed into the pipe by using a hammer.

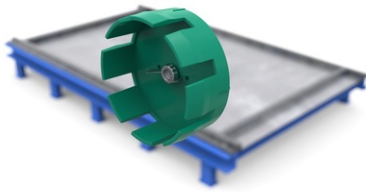


After removing the formwork, the formwork **FIX formwork aid** can be pulled out by using the **FIX removal aid** and the screw can be removed from the pipe.

Installation instruction FIX Formwork aid with the FIX Magnet Systems

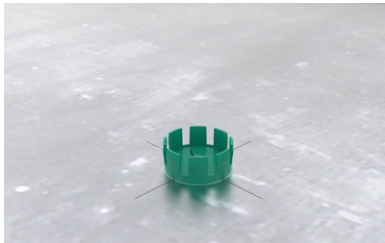
Insert the **FIX Magnet** into the **FIX Formwork aid**.





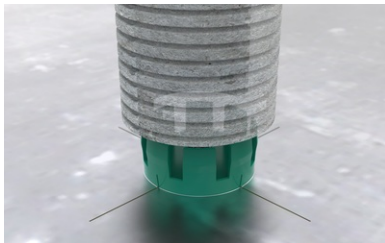
On the opposite side, secure the **FIX Magnet** with the supplied wing nut.

If necessary, the screw in the magnet must be held with an allen key.



Attach the **FIX formwork aid** to the desired position on the steel formwork.

For better orientation and easier positioning, there are markings on the sides of the formwork aid.

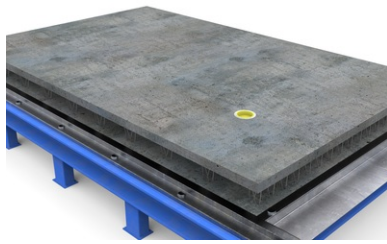


Place the lining pipe or the wall penetration on the **FIX formwork aid**.

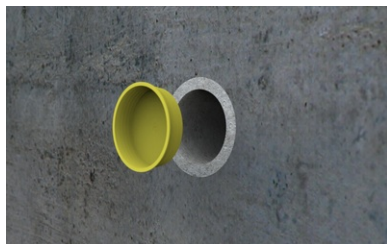


The pipe is then pushed down onto the formwork aid until it rests against the formwork.

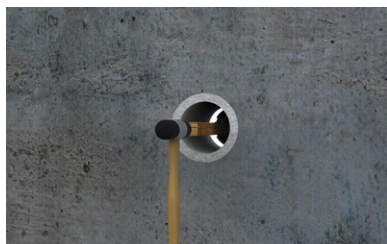
The clamping force of the claw and the magnet prevent the pipe from shifting in position.



After that, the reinforcement can be laid and the two shells concreted.

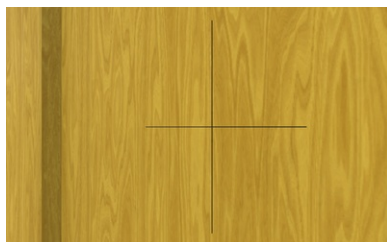


After setting up the finished wall part, the construction period cover is removed first (if installed)

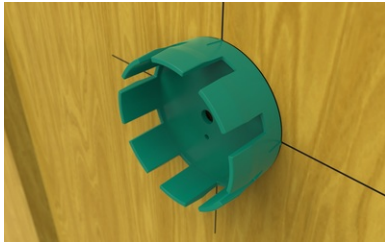


After that, the **FIX formwork aid** can be pushed out.

Installation instruction FIX formwork aid, attached with nails

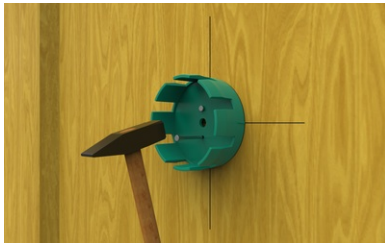


Mark the position of the pipe on the formwork



Attach the **FIX formwork aid** to the desired position on the formwork.

For better orientation and easier positioning, there are markings on the sides of the formwork aid.



Then attach the **FIX formwork aid** to the formwork, using nails through the provided holes.



Place the lining pipe or the wall penetration on the **FIX formwork aid**.

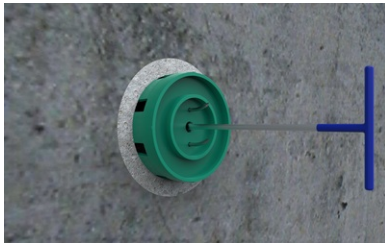


The pipe is then pushed onto the formwork aid until it rests against the formwork.

The clamping force of the claw is holding the pipe in position.



The reinforcement can then be laid, the second formwork placed and the wall concreted.



After removing the formwork, the formwork **FIX formwork aid** can be pulled out by using the **FIX removal aid**.

Stand: 23.04.2024



## Tarvikud

### FIX kruviadapteri komplekt

...

### FIX magnet sulgemisabi jaoks

Fikseeritud šalongitugi  
terasšalongi külge  
kinnitamiseks ...

## Alus

Kõik mõõtmed ja andmed käesolevas andmelehes kajastavad teostatud laborikatsete tulemusi. Meie poolt laboritingimustes kindlaks määratud väärtustest on võimalik kõrvalekaldumine, mis tuleneb keskkonna- ja töötingimustest, mis ei ole meie kontrolli all. Käesolevas andmelehes esitatud andmed kehtivad ainult meie poolt tarnitud toote kohta. Toote andmed vastavad ainult Saksamaal kehtivatele spetsifikatsioonidele. Võimalikke riigispetsifikseid kõrvalekaldeid ei ole siinkohal arvesse võetud.

## Õigusakti märkimine

Tehniline teave kajastab meie praeguseid teadmisi FIX 125 sulgemisabi. See on mõeldud ainult kasutajate teavitamiseks. Kuna me ei tea kavandatud rakendusi ja töötlemistingimusi, on kasutaja kohustus hoolikalt kontrollida, kas toode sobib ettenähtud otstarbeks. Seoses erinevate komponentidega paigalduskohas ja seal kehtivate töötingimustega ei saa MASTERTEC anda mingit garantiid töö tulemuse kohta. Igasugusest õigussuhtest tulenevaid nõudeid saab tunnustada ainult tahtliku kavatsuse või raske hooletuse korral, sõltumata siin esitatud väidetest või suuliselt antud nõuannetest. Sellisel juhul peab kasutaja tõendama, et ta on MASTERTECile kirjalikult esitanud kogu teabe, mis on vajalik paigaldussituatsiooni õigeaegseks hindamiseks. Vastavalt vajalikele tootespetsifikaatidele või edasistele arendustele. Käesoleva teabe esitamisega ei kavatse MASTERTEC rikkuda kolmandate isikute õigusi. Kohaldatakse iga juhtumi puhul viimast andmelehte. Kehtivad meie vastavad müügi- ja tarnetingimused.

## Varasemad andmelehted ei ole enam kehtivad

Prindi kuupäev 29.06.2024