

Įrengimo pamoka

"Master-Home-Connect" (MHC)- Einsparte-3 matuoklis

Vienkryptis įėjimas į namą, tinkamas 4-40 mm storio
vamzdžiui - su 3 m kabelių kanalu Ø 75 mm

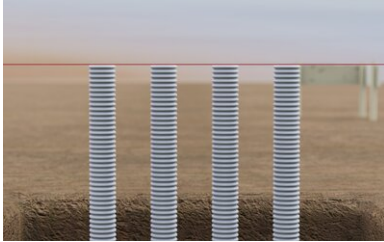
straipsnio numeris: 080035



Rodyti produktą

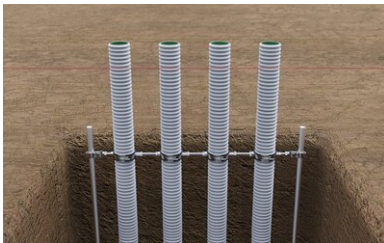


Jrengimo pamoka:



Positioning the cable conduit:

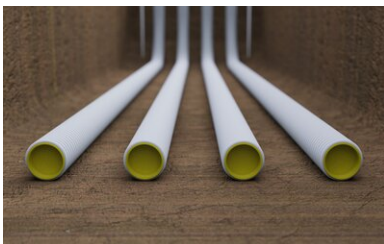
The cable protection conduits are routed from the transfer point to the desired insertion position under the floor slab and routed with a bending radius > 350 mm to at least the height of the upper edge of the floor slab.



Fixing the cable conduit:

The cable conduits are connected using the double-threaded clamps at the distance defined for in-line installation. The connection clamp is used to connect the double threaded clamps to the ground spike on both sides. This is driven into the ground before.

The height position of the connection clamp is positioned at min. 400 mm below the top edge of the base plate and fixed using the screws.



Closing the cable conduit / backfilling:

The ends of the cable conduits are sealed with the supplied protective covers.

The trench for the cable conduits can now be backfilled with suitable filling material and compacted in layers.



Installing the MHC lining pipe:

The cable conduits are now cut off XX mm below the top edge of the base plate. The end of the MHC lining pipe fitted with the connector is placed over the end of the cable conduit and fixed in place by tightening the metal clamp.

The vertical position of the lining pipe is not yet relevant at this stage.



Connection of the MHC lining pipes:

The MHC lining tubes are connected to each other using the duo spacer.

To do this, the pipes are clipped into the spacers and fixed in place using the rubber straps supplied.

The spacers are positioned at the height of the upper reinforcement layer.



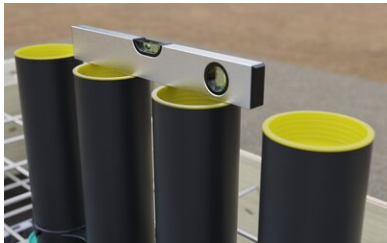
Underground of the floor slab:

The underground for the floor slab can then be produced in the form of a crushed stone or gravel bedding. When concreting a clean layer, the MHC system must be shuttered off. This maintains the elastic support for later vertical alignment.



Preparation of the floor slab:

The edge formwork of the floor slab is placed.
the reinforcement for the floor slab is installed.



Vertical alignment / concreting:

The MHC lining pipes are aligned vertically after the upper reinforcement layer has been inserted.
The position can be fixed to the upper reinforcement layer via the fixing holes in the spacers using binding wire.
After alignment and fixing, the floor slab can be concreted.

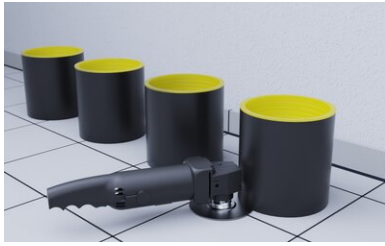


Connection to vapor barrier on the floor slab:

A suitable foil flange seal made of 1.5 mm thick PVC foil is available for the MHC system for integrating the flat vapor barrier on the floor slab.

This is designed at the factory for the 4-fold row arrangement. The foil flange is pushed over the lining pipes from the inside of the building and tightened to the pipe body using tensioning straps clamped to the pipe body. The flange transition is worked onto the surface seal.

If fewer than 4 lining pipes are used, the foil flange can be cut off on site.



Floor structure:

The planned floor structure, usually consisting of insulation, impact sound protection, underfloor heating if required, screed and top covering, can now be applied. The length of the lining pipes is designed for a floor structure with a construction height of up to 250 mm. For a visually appealing result, we recommend cutting off the protruding lining pipes at the level of the upper edge of the finished floor.

This can be done before or after installing the floor structure.



Media lines / end caps:

The required end cap is fitted at the end of the cable conduit on the transfer point side.

The media line can then be fed from the transfer point through the cable conduits into the building until it is pulled in far enough.

Solo end cap: 1 media line 4 - 40 mm

Duo end cap: 2 media lines 4 - 25 mm each

The end caps are placed over the cable conduit and over the media lines and fixed in place using clamps



Installing of MHC gasket inserts:

The MHC gasket inserts are finally fitted from the inside of the building:

MHC gasket insert Solo: 1 media line 4-40 mm

MHC gasket insert Multi: up to 2 media lines 2 x 4-25 mm
+ 2 x 10 mm

Stand: 03.01.2024

Pagrindas

Visi šiame duomenų lape pateikti matmenys ir informacija atspindi atliktų laboratorinių bandymų rezultatus. Nukrypimai nuo mūsų laboratorinėmis sąlygomis nustatytų verčių galimi dėl aplinkos ir eksploataavimo sąlygų, kurių mes negalime kontroliuoti. Šiame duomenų lape pateikti duomenys taikomi tik mūsų pristatytam gaminiui. Gaminio duomenys atitinka tik Vokietijoje galiojančias specifikacijas. Čia neatsižvelgiama į galimus šalies specifikacijų nuokrypius.

Teisės nurodymas

Techninė informacija atspindi mūsų dabartines žinias apie "Master-Home-Connect" (MHC)-Einsparte-3 matuoklis. Jis skirtas tik kaip informacija naudotojams. Kadangi mes nežinome numatomų naudojimo ir apdorojimo sąlygų, naudotojas privalo atidžiai patikrinti, ar gaminys tinka numatytiems tikslams. Dėl montavimo vietoje esančių skirtingų komponentų ir ten esančių darbo sąlygų MASTERTEC negali suteikti jokios garantijos dėl darbo rezultato. Iš bet kokių teisinių santykių kylančios pretenzijos gali būti pripažįstamos tik tyčios ar didelio neatsargumo atveju, nepriklausomai nuo čia pateiktų teiginių ar žodžiu duotų patarimų. Tokiu atveju naudotojas turi įrodyti, kad jis laiku raštu pateikė MASTERTEC visą informaciją, reikalingą teisingai įvertinti montavimo situaciją. Atsižvelgiant į būtinas gaminio specifikacijas arba tolesnę plėtrą. Pateikdama šią informaciją MASTERTEC neketina pažeisti trečiųjų šalių teisių. Kiekvienu atveju taikomas naujausias duomenų lapas. Taikomos atitinkamos mūsų pardavimo ir pristatymo sąlygos.

Ankstesni duomenų lapai nebegalioja

Spausdinimo data 30.06.2024