

Tutorial de instalare

Set de extensie galbenă MASTERTUBE-10 m

Gata de asamblare constând din: 10 m de furtun de
injecție MASTERTUBE, inclusiv materialul de instalare.

numărul articolului: 030055

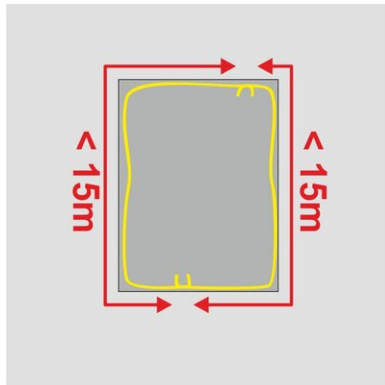


[Arată produsul](#)



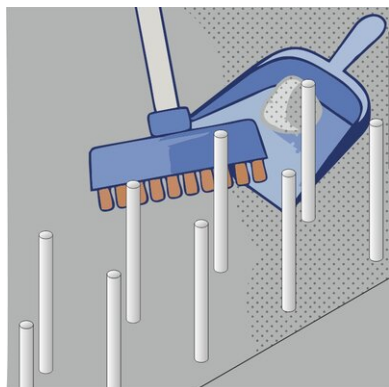
Tutorial de instalare:

Installation of injection hose



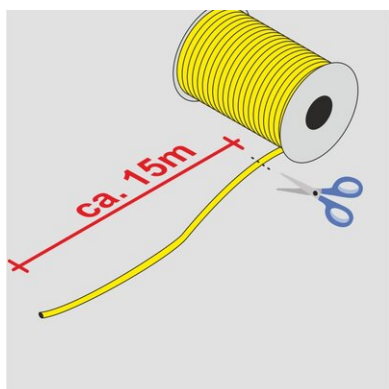
The injection hose **MASTERTUBE “YELLOW”** serves as internal waterproofing of construction joints.

- The length of the hose sections must not exceed 15 m. Shorter injection hose sections facilitate later injection.
- The injection hose is installed in the centre of the construction joint or – in case of constructional elements with a thickness of > 60 cm – at a distance of 15 cm from the water-remote side of the structure.
- Ensure a distance of 8 cm from the edge on all sides.



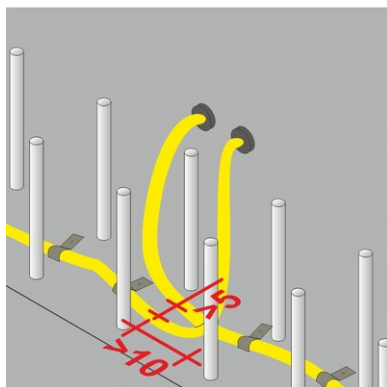
The concrete surface which the **MASTERTUBE** “**YELLOW**” is to be installed on must be as follows:

- clean and free from cavities
- free from loose particles and cement slurry
- free from release agents or other components that are separating or interfering with the adhesive bond
- free from ice and standing water



MASTERTUBE “**YELLOW**” is supplied as rolls of 100 m length.

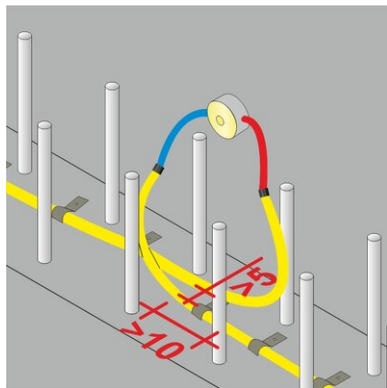
Cut the hose with a suitable cutting tool. Prior to cutting, mask the cutting section with 2 – 3 wraps of filament tape, which prevents the hose from tearing in longitudinal direction.



Fastening packers are screwed into the ends of the injection hose sections up to the thread end and fixed to the formwork surface. The position of the fastening packer should ensure permanent accessibility (floor structure and Technical Building Equipment must be taken into consideration). The fastening packers have closure plugs in 2 different colours. These are used for marking of the pairs used for the individual hose sections.

Successive injection hose sections must overlap by at least 10 cm to ensure continuous injection of the joint. The distance between parallel injection hoses must be min. 5 cm. Otherwise during injection of one hose section, the adjacent hose section might accidentally be filled as well.

If the distance of 5 cm cannot be provided in any subsection, this part of one of the hoses needs to be completely wrapped with filament tape in order to prevent accidental injection.

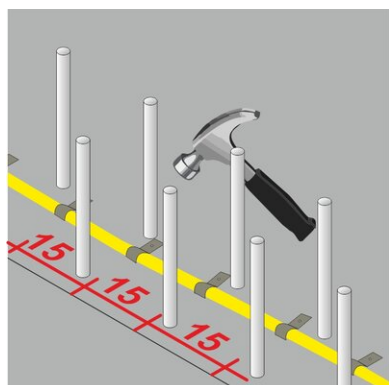


Alternatively, you may use injection end pieces instead of the fastening packers. These are 50 cm long unslit hoses with fabric sheath. By use of hose connectors the injection end pieces are screwed into the ends of the injection hose sections up to the thread. Fixing to the formwork surface is done by use of storage boxes, which the injections end pieces are led into and stored until later injection. The connection point between injection hose and injection end piece must be surrounded on all sides by at least 10 cm of concrete.

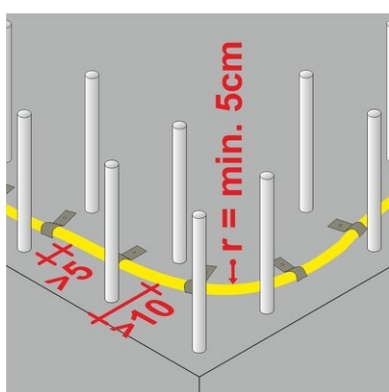
The position of the storage box should ensure permanent accessibility (floor structure and Technical Building Equipment must be taken into consideration). The injection end pieces are available in 2 different colours. These are used for marking of the pairs used for the individual hose sections.

Successive injection hose sections must overlap by at least 10 cm to ensure continuous injection of the joint. The distance between parallel injection hoses must be min. 5 cm. Otherwise during injection of one hose section, the adjacent hose section might accidentally be filled as well.

If the distance of 5 cm cannot be provided in any subsection, this part of one of the hoses needs to be completely wrapped with filament tape in order to prevent accidental injection

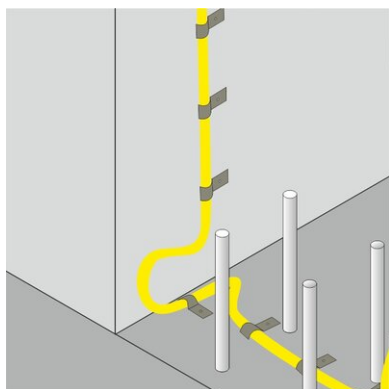


MASTERTUBE “YELLOW” must be fixed in such a way that it cannot shift neither before nor during concreting. It can be fastened by using metal clips or plastic fastening clips. The distance between either type of clips must not be more than 15cm in longitudinal direction. On very uneven surfaces and at each change of direction, the distance should be halved.



Changes of direction must be carried out with a sufficient bending radius in order to avoid damage to the hose or an obstruction of the overall injection.

The radius must be minimum 5 cm.



When changing between horizontal and vertical installation direction, the injection hose must be routed right into the corner of the joint and routed upwards via a loop. The minimum radius as well as the concrete cover need to be observed.

Injection

Injection of MASTERTUBE “YELLOW” is possible once the concrete has cured, 28 days after concreting at the earliest.

During injection the DBV code of practice: “Injection hose systems and swellable linings for construction joints” must be observed.

Status: 23.03.2022

Accesorii

MC-Injekt 2300 Top -1 litru

Rezină poliuretanică pentru
injectarea furtunurilor și
injectarea fisurilor ...

Baza

Toate dimensiunile și informațiile din această fișă tehnică reflectă rezultatele testelor de laborator care au fost efectuate. Sunt posibile abateri de la valorile determinate de noi în condiții de laborator din cauza condițiilor de mediu și de funcționare care nu pot fi controlate de noi. Datele din această fișă de date se aplică numai pentru produsul livrat de noi. Datele despre produs corespund numai specificărilor din Germania. Posibilele abateri specifice fiecărei țări nu sunt luate în considerare aici.

Indicarea legii

Informațiile tehnice reflectă cunoștințele noastre actuale despre Set de extensie galbenă MASTERTUBE-10 m. Acesta este destinat doar informării utilizatorilor. Deoarece nu cunoaștem aplicațiile și condițiile de prelucrare preconizate, este responsabilitatea utilizatorului să verifice cu atenție dacă produsul este adecvat pentru scopurile prevăzute. Din cauza diferitelor componente de la locul de instalare și a condițiilor de lucru existente acolo, MASTERTEC nu poate oferi niciun fel de garanție pentru rezultatul lucrărilor. Revendicările care decurg din orice raport juridic pot fi recunoscute numai în cazul unei intenții intenționate sau al unei neglijențe grave, indiferent de declarațiile făcute aici sau de sfaturile oferite verbal. În acest caz, utilizatorul trebuie să dovedească faptul că a furnizat în scris către MASTERTEC toate informațiile necesare pentru a evalua corect și în timp util situația instalației. Sub rezerva specificațiilor necesare ale produsului sau a evoluțiilor ulterioare. Prin furnizarea acestor informații, MASTERTEC nu intenționează să încalce drepturile terților. Se aplică cea mai recentă fișă tehnică în fiecare caz. Se aplică termenii și condițiile noastre corespunzătoare de vânzare și livrare.

Fișele de date anterioare nu mai sunt valabile

Data imprimării 17.07.2024