

## Kurulum eğitimi

### MASTERTUBE sarı uzatma seti- 10 m

Aşağıdakilerden oluşan hazır montajlı: 10 m  
MASTERTUBE enjeksiyon hortumu, montaj malzemesi  
dahil

makale numarası: 030055

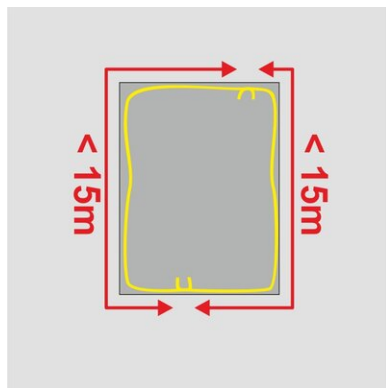


[Ürünü göster](#)



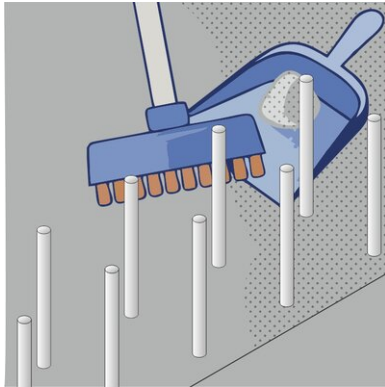
# Kurulum eğitimi:

## Installation of injection hose



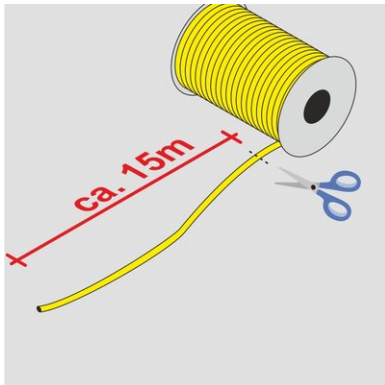
The injection hose **MASTERTUBE “YELLOW”** serves as internal waterproofing of construction joints.

- The length of the hose sections must not exceed 15 m. Shorter injection hose sections facilitate later injection.
- The injection hose is installed in the centre of the construction joint or – in case of constructional elements with a thickness of > 60 cm – at a distance of 15 cm from the water-remote side of the structure.
- Ensure a distance of 8 cm from the edge on all sides.



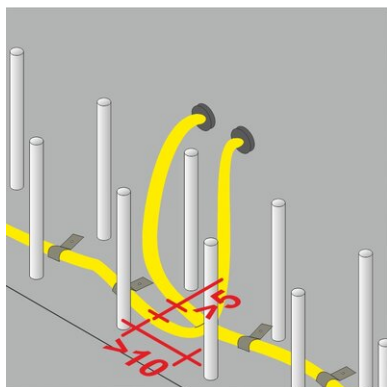
The concrete surface which the **MASTERTUBE** “**YELLOW**” is to be installed on must be as follows:

- clean and free from cavities
- free from loose particles and cement slurry
- free from release agents or other components that are separating or interfering with the adhesive bond
- free from ice and standing water



**MASTERTUBE** “**YELLOW**” is supplied as rolls of 100 m length.

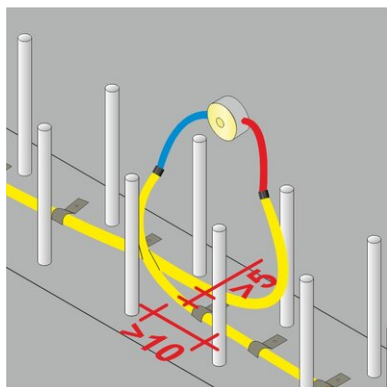
Cut the hose with a suitable cutting tool. Prior to cutting, mask the cutting section with 2 – 3 wraps of filament tape, which prevents the hose from tearing in longitudinal direction.



Fastening packers are screwed into the ends of the injection hose sections up to the thread end and fixed to the formwork surface. The position of the fastening packer should ensure permanent accessibility (floor structure and Technical Building Equipment must be taken into consideration). The fastening packers have closure plugs in 2 different colours. These are used for marking of the pairs used for the individual hose sections.

Successive injection hose sections must overlap by at least 10 cm to ensure continuous injection of the joint. The distance between parallel injection hoses must be min. 5 cm. Otherwise during injection of one hose section, the adjacent hose section might accidentally be filled as well.

If the distance of 5 cm cannot be provided in any subsection, this part of one of the hoses needs to be completely wrapped with filament tape in order to prevent accidental injection.

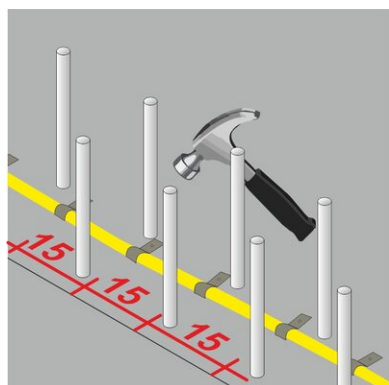


**Alternatively**, you may use injection end pieces instead of the fastening packers. These are 50 cm long unslit hoses with fabric sheath. By use of hose connectors the injection end pieces are screwed into the ends of the injection hose sections up to the thread. Fixing to the formwork surface is done by use of storage boxes, which the injections end pieces are led into and stored until later injection. The connection point between injection hose and injection end piece must be surrounded on all sides by at least 10 cm of concrete.

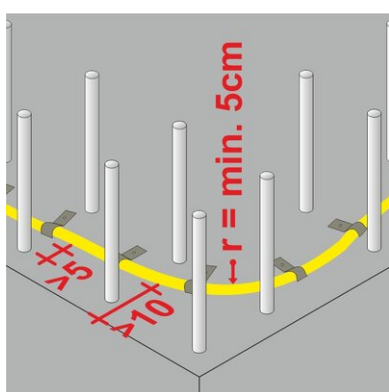
The position of the storage box should ensure permanent accessibility (floor structure and Technical Building Equipment must be taken into consideration). The injection end pieces are available in 2 different colours. These are used for marking of the pairs used for the individual hose sections.

Successive injection hose sections must overlap by at least 10 cm to ensure continuous injection of the joint. The distance between parallel injection hoses must be min. 5 cm. Otherwise during injection of one hose section, the adjacent hose section might accidentally be filled as well.

If the distance of 5 cm cannot be provided in any subsection, this part of one of the hoses needs to be completely wrapped with filament tape in order to prevent accidental injection

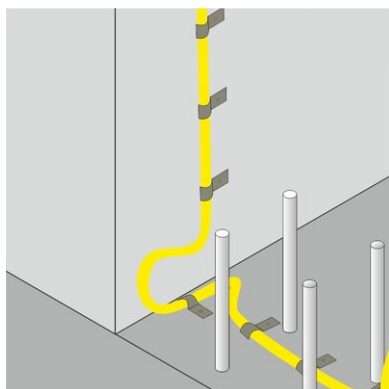


**MASTERTUBE “YELLOW”** must be fixed in such a way that it cannot shift neither before nor during concreting. It can be fastened by using metal clips or plastic fastening clips. The distance between either type of clips must not be more than 15cm in longitudinal direction. On very uneven surfaces and at each change of direction, the distance should be halved.



Changes of direction must be carried out with a sufficient bending radius in order to avoid damage to the hose or an obstruction of the overall injection.

The radius must be minimum 5 cm.



When changing between horizontal and vertical installation direction, the injection hose must be routed right into the corner of the joint and routed upwards via a loop. The minimum radius as well as the concrete cover need to be observed.

## Injection

Injection of MASTERTUBE “YELLOW” is possible once the concrete has cured, 28 days after concreting at the earliest.

During injection the DBV code of practice: “Injection hose systems and swellable linings for construction joints” must be observed.

Status: 23.03.2022

## Aksesuarlar

### MC-Injekt 2300 Üst -1 litre

Hortum enjeksiyonu ve çatlak enjeksiyonu için poliüretan reçine ...



## Temel

Bu veri sayfasındaki tüm boyutlar ve bilgiler, gerçekleştirilen laboratuvar testlerinin sonuçlarını yansıtmaktadır. Kontrolümüz dışındaki çevre ve çalışma koşulları nedeniyle laboratuvar koşullarında tarafımızca belirlenen değerlerden sapmalar olabilir. Bu veri sayfasındaki veriler sadece tarafımızdan teslim edilen ürün için geçerlidir. Ürün verileri yalnızca Almanya'daki spesifikasyonlara karşılık gelir. Olası ülke spesifik sapmaları burada dikkate alınmamıştır.

## Kanun belirtisi

Teknik bilgiler aşağıdaki konularda mevcut bilgilerimizi yansıtmaktadır MASTERTUBE sarı uzatma seti-10 m. Sadece kullanıcılara bilgi vermek amacıyla hazırlanmıştır. Öngörülen uygulamaları ve işleme koşullarını bilmediğimiz için, ürünün amaçlanan amaçlara uygun olup olmadığını dikkatlice kontrol etmek kullanıcının sorumluluğundadır. Kurulum sahasındaki farklı bileşenler ve buradaki çalışma koşulları nedeniyle, MASTERTEC işin sonucu için herhangi bir garanti veremez. Herhangi bir yasal ilişkiden doğan talepler, burada yapılan açıklamalara veya sözlü olarak verilen tavsiyelere bakılmaksızın, yalnızca kasıt veya ağır ihmâl durumunda kabul edilebilir. Bu durumda kullanıcı, kurulum durumunu doğru bir şekilde değerlendirmek için gereken tüm bilgileri MASTERTEC'e yazılı olarak zamanında verdiğini kanıtlamalıdır. Gerekli ürün özelliklerine veya daha fazla gelişmeye tabidir. MASTERTEC bu bilgileri sağlayarak üçüncü tarafların haklarını ihlal etme niyetinde değildir. Her durumda en son veri sayfası geçerlidir. İlgili satış ve teslimat hüküm ve koşullarımız geçerlidir.

## Önceki veri sayfaları artık geçerli değildir

Baskı tarihi 17.07.2024